



# 2023 STATEWIDE COMPETITIONS

OPERATIONS MANUAL



## CONTENTS

1.	ADMISSION PRICES .....	1
2.	BALL PERSONS .....	1
3.	BLEEDING PLAYERS & HYGIENE .....	2
4.	CANCELLATION, POSTPONEMENT, ABANDONMENT, FORFEIT .....	3
5.	COGNITIVE TESTING .....	4
6.	COIN TOSS AND TEAM RUN-ON .....	4
7.	COMPETITION FORMAT .....	4
8.	CURTAIN RAISER .....	5
9.	DISMISSED PLAYERS .....	6
10.	ELIGIBILITY – FIXTURES & FINALS .....	6
11.	EQUIPMENT .....	7
12.	FACILITIES .....	9
13.	FINALS SERIES .....	10
14.	GAME DAY OPERATIONS TEAMS .....	12
15.	GROUND MARKINGS & DIMENSIONS .....	12
16.	HEAT POLICY .....	14
17.	INSURANCE .....	14
18.	INJURY REPORTING / WORKPLACE HEALTH AND SAFETY .....	14
19.	MATCH FOOTBALLS .....	15
20.	MATCH OFFICIALS .....	15
21.	MATCH REPORTS .....	15
22.	MATCH REVIEW / JUDICIARY .....	16
23.	MATCH TIME .....	16
24.	ON-FIELD POLICY - PERFORMANCE LEVEL .....	17
25.	PUBLIC ANNOUNCEMENTS .....	19
26.	REGISTRATIONS .....	20
27.	REPLACEMENTS (INTERCHANGE) .....	21
28.	SALARY CAP / CONTRACTING MODEL .....	26
29.	SIDELINE AREA AND BENCH LOCATIONS .....	26
30.	SPORTS INTEGRITY AUSTRALIA (SIA) .....	27
31.	TEAM LIST SUBMISSION .....	27
32.	TIMEKEEPING .....	28
33.	TRAVEL LOGISTICS .....	29
34.	TRIALS .....	31
35.	VIDEOGRAPHY .....	31
36.	WARM UP AREA .....	32
37.	WELLBEING AND EDUCATION .....	32
	APPENDIX 1 - CATCHMENT AREAS .....	33
	APPENDIX 2 - TRAVEL SCHEDULE .....	35
	APPENDIX 3 - DEVELOPMENT FEES – POLICY OF THE NATIONAL RUGBY LEAGUE .....	37
	APPENDIX 4 - SALARY CAP / CONTRACTING MODEL .....	42
	APPENDIX 5 - CONCUSSION MANAGEMENT POLICY AND PROCEDURE .....	45
	APPENDIX 6 - 2023 BMD PREMIERSHIP PLAYER POINTS INDEX SYSTEM (PPIS) .....	48
	APPENDIX 7 - 2023 QRL STATEWIDE COMPETITIONS RULE CHANGES & ADOPTIONS .....	49

## 1. ADMISSION PRICES

- 1.1. Each club shall be responsible for assigning ticket prices for their home matches. Such fees shall be subject to a maximum fee for general admission. Higher fees can be charged for Premium Seating & Corporate.
- Hostplus Cup matches a maximum fee of \$10.00
  - BMD Premiership / Hastings Deering Colts / Harvey Norman U19s / Auswide Bank Mal Meninga Cup and or Cyril Connell Challenge stand-alone matches a maximum fee of \$5.00
  - Where a BMD Premiership / Hastings Deering Colts / Harvey Norman U19s / Auswide Bank Mal Meninga Cup and or Cyril Connell Challenge match is held in conjunction with a Hostplus Cup match, entry fee shall be subject to a maximum fee of \$10.00 for general admission tickets.
- 1.2. Aged, invalid and service pensions (concessions) shall be recognised by all clubs. Such fees shall be subject to a maximum fee for a general admission ticket for those persons eligible for an aged, invalid or service pension.
- Hostplus Cup matches a maximum fee of \$5.00
  - BMD Premiership / Hastings Deering Colts / Harvey Norman U19s / Auswide Bank Mal Meninga Cup and or Cyril Connell Challenge stand-alone matches a maximum fee of \$2.00
  - Where a BMD Premiership / Hastings Deering Colts / Harvey Norman U19s / Auswide Bank Mal Meninga Cup and or Cyril Connell Challenge match is held in conjunction with a Hostplus Cup match, entry fee for concessions shall be subject to a maximum fee of \$5.00 for general admission tickets.
- 1.3. Children under the age of 15 years shall be permitted entry into general admission areas for all matches free of charge.
- 1.4. QRL season passes shall be recognised by all clubs during premiership rounds and finals series matches (excluding Grand Finals). Entry shall be subject to the terms and conditions printed on the passes.

## 2. BALL PERSONS

- 2.1. Ball persons must be a minimum of 10 years of age and be registered via the National Registration database as a volunteer to be covered under the club's insurance.
- 2.2. A maximum of four (4) ball persons may be used during each match. Each club shall be entitled to appoint two (2) each.
- 2.3. The visiting club may request the home team to make available a maximum of two (2) persons to act for the visiting club in the role of ball persons.
- 2.4. Ball persons must place and leave the ball on the touchline at the point where the ball crossed the line and next to the touch judge. Ball persons MUST NOT under any circumstances, throw the ball into the field of play or to a Player close to the touch line.
- 2.5. Ball persons who enter the field of play to deliver kicking tees may only do so at a stoppage of play and must leave the field of play immediately after its delivery. After the kick has been taken a trainer must remove it from the field.
- 2.6. Trainers, rather than ball persons, must retrieve the kicking tee after any kick off to restart play.
- 2.7. Minimum clothing requirements for ball persons are two (2) set of shorts, socks and shirts / jerseys in colours that do not clash with either team's playing attire. In wet weather, clear plastic coats should be provided by the home team.
- 2.8. The club's sponsor's logos may be displayed on the shirt / jersey except for alcohol product logos.

### USE OF MOTORISED VEHICLES

- 2.9. Upon written application, the Competitions Manager (or their nominee) may approve the use of motor bikes or similar motorised vehicles for the purpose of conveying kicking tees and/or sand onto the field of play.

The following provisions for the use of these vehicles must always be strictly adhered to:

- 2.10. The vehicles may only be taken onto the field when the ball is out of play for an attempt at conversion following a try, a penalty kick at goal, and starts of play from the 50-metre line but must immediately return to outside the field of play.
- 2.11. The vehicles may not enter the field of play in any other circumstances (e.g. a penalty place kick for touch, or a 20-metre restart).



- 2.12. The vehicles may only deliver the kicking tee to the kicker. They must immediately leave the field and return to the approved position where these vehicles must be parked when not in use, as outlined in [2.18](#).
- 2.13. Under no circumstances are the vehicles to stay on the field until the kick has been taken (i.e. a trainer must retrieve the tee after the kick).
- 2.14. The riders or drivers must always be mature and competent enough to operate the vehicles safely.
- 2.15. The operation of the vehicle is to be under the constant management and supervision of a club official.
- 2.16. The vehicles are not to be used in any manner that could potentially pose a risk of injury to players or on-field officials.
- 2.17. The vehicles must always be operated responsibly and take the most direct route on and off the field.
- 2.18. When not on the field, the vehicles must be kept at a safe distance from the touch line and not impede the access or movement of other officials (e.g. touch judges, trainers, media etc.)
- 2.19. The vehicles must be well maintained and not cause any excessive noise or visual pollution when in use.
- 2.20. The QRL reserves the right to withdraw approval for the use of such vehicles, without cause, at any time.

### 3. BLEEDING PLAYERS & HYGIENE

#### BLEEDING PLAYER PROCEDURE

- 3.1. The following procedure will apply in all cases where a player is bleeding on their person, clothing or equipment has been contaminated by blood.
- If the referee notices a bleeding or blood contaminated player, they will immediately stop play and call 'time-out' and signal to the team trainer to attend to the player.
  - The team trainer will immediately enter the field of play to assess whether the player can be quickly treated on the field or whether the player will require treatment off the field.
  - If the trainer advises that the player can be treated on the field, the referee will instruct the player to drop out behind play for that purpose and the match will immediately recommence.
  - If the trainer advises the referee that they will have to treat the player off the field, the match will not restart until the player has left the field. The player may be interchanged, or alternatively the team can elect to temporarily play with 12 players. (Note: other than for the initial assessment, the match will not be held up while the bleeding player receives treatment or is interchanged).
  - If the referee stops play twice for the same player and the same wound, the player must be taken from the field for treatment and either interchanged or the team may elect to play on with 12 players until the bleeding player returns.
  - The referee will hold the game up to replace a bleeding player, but a trainer must first advise the referee that an interchange is going to take place.
  - If a bleeding player has left the field for treatment and is not interchanged, the player may return to the field of play at any time provided the player does so from an on-side position. If the bleeding player has been interchanged, the player may only return to the field through the interchange official as a normal interchange player.
  - A bleeding player returning to the field of play who has not been interchanged, is not to be regarded as a replacement / interchange player and therefore may take a kick for goal. Conversely, a bleeding player returning to the field of play who has been interchanged may not take a kick for goal at that time.

#### STITCHING / STAPLING

- 3.2. Any player who is bleeding and requires treatment by way of either stitches, stapling or otherwise, must be taken to the team dressing room or shared medical facility so this procedure can be conducted out of the view of the general public.
- 3.3. After the treatment, the wound must be bandaged or covered to protect the injury, to eliminate the risk of further bleeding and to prevent the potential risk of transmission of blood-borne infectious diseases.



## CONTAMINATED CLOTHING

- 3.4. In any case where a player's person, clothing or equipment has been contaminated by blood, whether through a wound to himself or through contact with a wounded player, the referee shall direct the team trainer to enter the field of play to attend to that player by taking immediate steps to ensure that the player is free of any blood contamination before that player shall be permitted by the referee to re-join play. Until those steps have been taken, the player shall, at the minimum, drop out behind play.
- 3.5. Minor occasions of contaminated clothing and/or equipment should be treated with a solution of 15mls of household detergent and 17mls of household bleach.
- 3.6. All but minor occasions of contaminated clothing or equipment will require the replacement of such clothing or equipment prior to the player re-entering the field of play.

## HYGIENE

- 3.7. Players should be made aware of the potential danger of transferring infectious diseases, e.g. Hepatitis A, B and C and HIV.
- 3.8. Spitting is not permitted, except in specified controlled areas.
- 3.9. Contaminated and blood-stained articles and dressings are to be placed in appropriate 'contaminated waste' disposal bags.
- 3.10. Dressing room floors should be cleaned and swept prior to the team leaving the room after every match.
- 3.11. Players must not share drink containers. Each player should have their own drink container. Shared drink containers may transmit disease.
- 3.12. Current Queensland Government COVID protocols must be adhered to at all times.

## 4. CANCELLATION, POSTPONEMENT, ABANDONMENT, FORFEIT

- 4.1. All Statewide Competition matches may only be cancelled, delayed, postponed or abandoned with the prior approval of the Competitions Manager.
- 4.2. If the referee suspends play and the match is cancelled or abandoned there shall be no replay.
- 4.3. If half or more of the match has been completed, the score at the time of the suspension of play in the match will be the result for the purpose of determining the Competition Points Table.
- 4.4. If less than half of the match has been completed, the match shall be declared drawn and one (1) point awarded to each of the teams. For Competition Points Table purposes, the score for the match will be recorded as 0-0.
- 4.5. If any team is unable to play a scheduled match, due to extenuating prior circumstances and it cannot be replayed, and with prior approval from the Competitions Manager, then that match will be declared drawn and one (1) point awarded to each of the teams. For Competition Points Table purposes, the score for the match will be recorded as 0-0.
- 4.6. If any team forfeits a match, the forfeiting club may be liable for any costs incurred from the fixture that cannot be recovered or credited. This may include flights, buses, accommodation and meals.
- 4.7. Preliminary matches such as BMD Premiership / Hastings Deering Colts / Harvey Norman U19s / Auswide Bank Mal Meninga Cup / Cyril Connell Challenge which, due to serious injury or other delay, encroach on the next scheduled game, may be abandoned after receiving authorisation from the Competitions Manager (or their nominee). The result of such match shall be determined by applying the procedures outlined in sections [4.3](#), [4.4](#) and [4.5](#).
- 4.8. Where preliminary matches are played under the jurisdiction of a Local League or other governing body the abandonment and procedures of such abandonment will be the responsibility of the Local League or other relevant governing body.
- 4.9. Emergency circumstances include:
  - A natural disaster such as an earthquake, flood or fire.
  - A situation where the safety of players or match officials is potentially or actually at risk such as lightning, or extreme heat.
  - Where scheduled transport for one of the teams for the playing of the match is delayed or cancelled.
  - Such other circumstances deemed to be an emergency by the Competitions Manager (or their nominee). This may include, but not limited to, Queensland Government COVID restrictions.



- 4.10. If any such occurrence arises, the procedure shall be as follows:
- The Competitions Manager (or their nominee), in conjunction with the referee and both team's management will make any decision on the postponing or cancelling of any scheduled game;
  - After the commencement of a competition match, a referee may temporarily suspend play if, in their view, continuation of play would place the safety of Players and/or the Match Officials at risk.
  - If a game is to be delayed due to severe weather conditions, a decision will be made on the length of delay.
  - Where a game is in progress and is stopped due to an emergency, the following steps must be taken:
    - As the emergency is a 'time out', a direction will be given by the referee regarding field position, possession and the number of the tackle, at the time of cessation of play;
    - If the game re-commences within a reasonable time, play will continue as with any 'time out' – with the same field position, possession and the next tackle count.
    - If the game cannot be continued, the circumstances shall be reported to the Competitions Manager (or their nominee).

## 5. COGNITIVE TESTING

- 5.1. Each player in all Statewide Competitions is to undergo two Baseline Cognitive and Concussion Tests, via Cognigram and Smartabase, or any other platform as instructed by the QRL. Two separate tests are required – one for long term player health and one for immediate match day assessment and return to play.
- 5.2. Baseline testing must take place prior to the player taking the field in any trials or competition matches.
- 5.3. All players shall be required to complete the relevant (Junior or Senior) mandatory online education module prior to taking the field in any competition match, detailed in [section 37](#).
- 5.4. Refer to [Appendix 5](#) for additional information and procedures.

## 6. COIN TOSS AND TEAM RUN-ON

- 6.1. Captains of each team, or their nominated player representative, are required to take part in the coin toss in the presence of the match referee before each team's warm up.
- 6.2. The toss may be broadcast (at the discretion of the host broadcaster), and captains are required to comply with any reasonable requests from the host broadcaster for a brief interview immediately after the toss has been completed.
- 6.3. In all cases the visiting team will take the field first when directed by the QRL Ground Manager or Match Officials, followed by the home team also when directed by the QRL Ground Manager or Match Officials.
- 6.4. Team Officials must adhere to requests of Game Day Operations Team members regarding entry or return to the field of play to meet scheduled game times.

## 7. COMPETITION FORMAT

- 7.1. The Hostplus Cup and the BMD Premiership are open aged competitions for players attaining a minimum age of 18 years in the year of competition. Players turning 17 years' in the year of the competition can apply for a written exemption to the Competitions Manager via their relevant Hostplus Cup or BMD Premiership Head Coach and CEO. **Training program to start no earlier than the 2<sup>nd</sup> weekend in November.**
- 7.2. The Hastings Deering Colts is a restricted age competition for players who will turn 18, 19, 20 or 21 years' in the year of the competition (i.e. players born in 2002, 2003, 2004 or 2005). Players turning 17 years' in the year of the competition can apply for a written exemption to the Competitions Manager via their relevant Hostplus Cup Head Coach and CEO. **Training program to start no earlier than the 2<sup>nd</sup> weekend in November.**
- 7.3. The Harvey Norman U19s is a restricted age competition for female players who will turn 17, 18 or 19 years' in the year of the competition (i.e. players born in 2004, 2005 or 2006). **Training program to start no earlier than the 2<sup>nd</sup> last weekend of November. Induction Day and Wellbeing and Education sessions ONLY can be held before this date.**



- 7.4. The Auswide Bank Mal Meninga Cup is a restricted age competition for players who will turn 17 or 18 years' in the year of the competition (i.e. players born in 2005 or 2006). **Training program to start no earlier than the 2<sup>nd</sup> last weekend of November. Induction Day and Wellbeing and Education sessions ONLY can be held before this date.**
- 7.5. The Cyril Connell Challenge is a restricted age competition for players who will turn 15 or 16 years' in the year of the competition (i.e. players born in 2007 or 2008). **Training program to start no earlier than the 2<sup>nd</sup> last weekend of November. Induction Day and Wellbeing and Education sessions ONLY can be held before this date.**
- 7.6. Players eligible for Auswide Bank Mal Meninga Cup must play in that competition and their teams' participation in that competition completed prior to them being eligible for selection in either the Hastings Deering Colts or the Hostplus Cup in conjunction with the age limits above. Clubs can apply for an exemption to this rule through written submission to the Competitions Manager with the consent of both the Hostplus Cup Head Coach and CEO.
- 7.7. Players eligible for Harvey Norman U19s must play in that competition and their teams' participation in that competition completed prior to them being eligible for selection in the BMD Premiership in conjunction with the age limits above. Clubs can apply for an exemption to this rule through written submission to the Competitions Manager and Female Pathways & WSOO Head Coach with the consent of both the BMD Premiership Head Coach and CEO.
- 7.8. Competitions shall be conducted over the following timeframes:
- |                              |   |
|------------------------------|---|
| Hostplus Cup                 | Max. of 22 premiership rounds of competition with a 4-week finals series. |
| BMD Premiership              | Max. of 7 premiership rounds of competition with a 4-week finals series.  |
| Hastings Deering Colts       | Max. of 16 premiership rounds of competition with a 4-week finals series. |
| Harvey Norman U19's          | Max. of 7 premiership rounds of competition.                              |
| Auswide Bank Mal Meninga Cup | Max. of 7 premiership rounds of competition with a 2-week finals series.  |
| Cyril Connell Challenge      | Max. of 7 premiership rounds of competition.                              |
- 7.9. Competition points shall be allocated during the season in the following manner:
- A win shall be allocated two (2) points.
  - A draw shall be allocated one (1) point.
  - A loss shall be allocated zero (0) points.
  - A bye shall be allocated two (2) points.
  - A team receiving a forfeit shall be allocated two (2) points.
  - The forfeiting team shall be allocated zero (0) points.
- 7.10. In the event of a forfeit, for Competition Points Table purposes, a score of 40-0 shall be awarded to the non-forfeiting team.
- 7.11. At the conclusion of the premiership rounds all teams shall be ranked in descending order according to the number of competition points accrued during the season.

## 8. CURTAIN RAISER

- 8.1. For any matches being played as curtain raiser to the NRL, the usual QRL expectations still apply.

- 8.2. The following needs must be addressed by the 'home' team:

Hostplus Cup Match	BMD Premiership Match	Hastings Deering Colts Match
<ul style="list-style-type: none"> <li>• 4 x Hostplus Goal Post Pads,</li> <li>• 4 x XXXX Corner Posts</li> <li>• 3 x Hostplus Bolsters (positioned both try lines and the 50-metre line on the opposite sideline to the cameras)</li> <li>• 4 x QRL Rebel footballs</li> <li>• 3 x iPads, 2 x Interchange Cards sets, 1 x Interchange Official vest, 2 x stopwatches</li> </ul>	<ul style="list-style-type: none"> <li>• 4 x BMD Goal Post Pads,</li> <li>• 4 x QRL Rebel footballs</li> <li>• 3 x iPads, 2 x Interchange Cards sets, 1 x Interchange Official vest, 2 x stopwatches</li> </ul>	<ul style="list-style-type: none"> <li>• 2 x Hastings Deering bolsters (positioned on both 40-metre lines on the opposite sideline to the cameras)</li> <li>• 4 x Hastings Deering footballs</li> <li>• 3 x iPads, 2 x Interchange Cards sets, 1 x Interchange Official vest, 2 x stopwatches</li> </ul>

- 8.3. If playing as a curtain-raiser to a NRL match, confirm with the NRL club the following details:
- No conflicting sponsors to Hostplus, XXXX, Hastings Deering or Auswide Bank to be advertised during the matches
  - Will they provide ball persons, NRL Game Day Operations Staff and NRL Game Day Doctor?
  - Number of tickets they will be providing for both home and away teams and match officials?



- Location for entry for Teams/Match Officials/QRL Game Day Operations Staff?
- Will they provide post-match meals for teams and match officials?
- Parking for Match Officials and QRL Game Day Operations Staff.

## 9. DISMISSED PLAYERS

### TEMPORARY SUSPENSION

- 9.1. A player receiving a period of temporary suspension by the referee shall leave the field of play and enter the sin bin area allocated by the home team and remain in that area until the end of the temporary suspension period.
- 9.2. The time of temporary suspension shall be ten (10) minutes and is for playing time only and shall commence after the referee signals time-on and/or when play recommences.
- 9.3. The temporary suspension shall be suspended if the referee signals time-off during the suspension period and shall recommence when the referee recommences play.
- 9.4. Suspended time does not include the half-time break and shall cease at the end of the first period and resume upon the commencement of the second period. If play continues after the siren has sounded, this time is included towards the players suspension until the referee blows time on the half.
- 9.5. If more than one player receives temporary suspension from the one incident, the players' temporary suspension shall be equal, and they shall be entitled to return to the field of play together after the completion of their suspension.
- 9.6. Players re-entering the field of play shall do so from an onside position after reporting to the Touch Judge.

### PERMANENTLY DISMISSED PLAYERS

- 9.7. Any player permanently dismissed from the field (i.e. sent-off), must immediately retire to their team's dressing room until the player has changed out of their playing uniform.
- 9.8. Under no circumstances can a dismissed player return to the players' bench unless it is outside the area bounded by the fence surrounding the playing area.
- 9.9. Immediately after the completion of the match the referee shall lodge with the nominated QRL Ground Manager the Referees On-Field Incident Report of the dismissed player.

### SUSPENDED PLAYERS

- 9.10. Any Player who is suspended or disqualified from playing rugby league by the QRL Judiciary Panel or any other Judiciary and disciplinary bodies with authority to make such determinations shall not participate as a Player in any match until that suspension has been served or that disqualification has expired, as the case may be, and must not enter the playing field or area inside the fence prior to, during, or after a match.
- 9.11. No Pre-Season Trial Match is to be taken into account when determining the period of suspension - **as per rule 44A from the NRL Judiciary Code – QLD Edition.**
- 9.12. Without derogating from clause [9.11](#), in any case where a player is serving a period of suspension as the sole consequence of a conviction for either a Grade 1 Offence or a Grade 2 Offence, the player may participate in a Pre-Season Trial Match during the period of suspension, but the player shall not otherwise participate in any other match (whether that be an Ordinary Match, a carnival, a Final Series Match, a Representative Match or a Touring Team Match).
- 9.13. To remove doubt, where a Player is entitled to participate as a Player in a Pre-Season Match during their period of suspension pursuant to [9.12](#), and does so participate, that participation will not reduce their allocated or accumulated demerit points.

## 10. ELIGIBILITY – FIXTURES & FINALS

- 10.1. There are four eligibility categories for Final Series qualifications:

Level One	NRL Telstra Premiership and NRLW	(Highest Level)
Level Two	Hostplus Cup & BMD Premiership	
Level Three	Local League Open Age Competitions	





	<i>(exclusive to Hastings Deering Colts / A Grade / Division 1)</i>	
Level Four	Under Age Competitions <i>(i.e. Harvey Norman U19 / Auswide Bank Mal Meninga Cup / Cyril Connell Challenge)</i>	<i>(Lowest Level)</i>

- 10.2. Qualification shall commence at the start of each premierships competition and cease upon the completion of each competition's premierships rounds.
- 10.3. A player shall be deemed eligible for the Final Series of the competition in which the player played the majority of games throughout the premierships season.
- 10.4. If a player has participated in an equal amount of premierships competition matches in multiple levels of competitions, the player shall be deemed qualified for the lower level.
- 10.5. However, if a player has participated in five (5) games or more in any open aged competitions (Level 1, 2 or 3 (excluding HDC)) or one (1) game or more in any Statewide female competition (Level 2 – BMD Premiership) or under aged competitions (Level 3 – HDC & Level 4 - MMC) throughout the season, such player will be deemed eligible to compete in that competitions' Finals Series (or a higher Level), regardless of whether the player has played a majority of games in that competition.
- 10.6. A player who has qualified for a lower level competition finals series shall still be eligible to participate in the final series of a higher-level competition.
- 10.7. If they have not satisfied the criteria in [10.3](#) or [10.5](#), a higher-level qualified player shall not be eligible to participate in a lower level final series unless the player has failed to gain selection in the higher-level team playing on the same weekend.
- However, if the higher-level team is still competing but has a bye in their relevant final series then players are eligible to play for the lower level team provided they have played at least one match for the lower level team during the regular season.
- 10.8. A higher-level qualified player who has failed to gain selection in that team is to be deemed eligible to play in a lower level finals series provided they have played at least one (1) regular season match at the lower level. A player whose team is eliminated from a higher-level competition must have played a minimum of one (1) finals series match to be deemed eligible to continue in lower level finals series, therefore eliminating any of the previous eligibility rules.
- 10.9. A player will not be eligible to play in two levels of a Final Series scheduled on the same weekend except where the lower level team has played earlier than the higher-level team on that weekend, provided they have qualified for the lower level using the criteria above.
- 10.10. Each Club with a team engaged in any Final Series shall lodge a list of players whom they consider to be eligible to play in each level by no later than 1.00pm on the second business day (generally Tuesday) following the conclusion of the last premierships competition match.
- 10.11. A player shall be deemed to have participated in a match if that player was nominated on the final team list
- 10.12. A player who participates in any Statewide Competition match on any given weekend shall not be eligible to participate in any other QRL match on the same weekend without the approval of the Competitions Manager (or their nominee) and the Local League Operations Manager.
- However, any player who plays ten (10) minutes or less in any fixture of any level may seek approval from the Competitions Manager (or their nominee) and the Local League Operations Manager to play in a lower level match on the same weekend.

## 11.EQUIPMENT

### PLAYER EQUIPMENT

Please refer to Brand Guidelines for requirements regarding Player Apparel.

- 11.1. Jerseys must be manufactured in accordance with the QRL Brand Guidelines relevant to the year of competition and submitted for approval prior to production to [apparel@qrl.com.au](mailto:apparel@qrl.com.au) or the relevant submission platform as determined from time to time by the QRL (currently Smartabase).
- 11.2. A Player must not wear any item that might prove dangerous to other players. If in doubt a player is required to have any such item approved by the match officials prior to the commencement of the match.
- 11.3. A player may wear compression garments but may only do so as follows;



- The length of the garment must not extend below the elbow or knee of the player, outside the neck / collar of the jersey, or the length of the playing sock.
- The colour of the garment may only be black or an approved colour which shall be the colour of the playing socks.
- The wearing of full-length compression garments is not permitted unless approved by the Competitions Manager or receipt of medical clearance/advice.

11.4. Protective equipment may be worn provided it contains nothing of a rigid nature. Protective clothing refers to shoulder pads, arm bands, rib covering, head gear, hip pads and must not be of a rigid nature. The match officials will make a final decision in areas of doubt relating to what is considered as rigid.

11.5. Studs on boots or shoes must be no less than 8mm diameter at the apex and, if made of metal, must have rounded edges.

11.6. The playing jersey should be tucked inside the top of the shorts and remain tucked in throughout the match. This means that extra short jerseys or those cut above the waist are prohibited.

### **DANGEROUS & PROHIBITED EQUIPMENT**

11.7. The use of gloves or mittens is prohibited.

11.8. All visible body jewellery shall be removed, and non-visible jewellery must be taped prior to the commencement of the match.

11.9. Players with beads in their hair must remove them or must wear head gear which covers them.

11.10. Players are permitted to wear power bands / wristbands on the field during matches, however they must be covered by tape so that no part of the band is visible.

11.11. The practice of 'knotting' (pulling together and tying a knot in the jersey) or 'bundling' (pulling together in a bundle or tail and taping) as a method for tightening the fit of a Rugby League jersey is prohibited.

11.12. Any items of non-standard or modified equipment must first be approved for use by the Competitions Manager (or their nominee) before that item may be used by a player in a match.

11.13. The referee may order a player to remove any item or any part of their equipment which might be considered dangerous and shall not allow the player to take any further part in the match until the item or equipment is removed.

11.14. Such a player must retire from the playing field to remove the offending item if the start or re-start of the match would otherwise be delayed.

11.15. The match officials must check all equipment prior to the commencement of each match.

11.16. Under no circumstances are fireworks to be placed on the field of play at any time before the game without the prior approval of the Competitions Manager (or their nominee). Additionally, no fireworks are to be placed anywhere near the player's tunnels as the players enter the field.

### **FIELD EQUIPMENT**

Please refer to Brand Guidelines for requirements regarding on field equipment.

11.17. Corner posts shall be placed at the intersection of each touch line and goal line. The posts shall be of non-rigid material and shall be not less than 1.25m high.

11.18. For the avoidance of doubt, spring loaded corner posts and/or those with metal spikes are not permitted for use.

11.19. Corner post pads may be no wider than the width of the touch line and shall comply with the QRL Brand Guidelines relevant to the year of competition.

11.20. If a ball carrier makes contact with the corner post the player will not be deemed to be out of play unless any part of their body has made contact with either the touch line or touch-in-goal line, or the ground beyond the touch line or touch-in-goal line.

11.21. Goal post pads shall be a maximum width and depth of 50cm and shall comply with the QRL Brand Guidelines relevant to the year of competition.



- 11.22. A kicking tee may be used provided it is a product that is licenced and displays the logo of the QRL, NSWRL or NRL. Such tees may be used for kicks at goal and starts or restarts of play from the 50m line.

## CLUB EQUIPMENT

- 11.23. Clubs to maintain allocated club kit which includes the following;

- Interchange cards Home Set (1)
- Interchange cards Away Set (1)
- Sports Trainer cards Set (1)
- Interchange Vest (1) & Photographers Vest (1)
- HIA Vest (1)
- Stopwatches (2)
- QRL iPads (3)
- Protective iPad cases (3)
- iPad chargers (3)

These items must be kept in a secure place. Any lost or damaged gear needs to be registered for replacement with the QRL.

## 12.FACILITIES

### VENUES

- 12.1. The club shall ensure that the venue nominated to host a competition match is presented in an appropriate manner and has adequate ground officials / security engaged in the interest of the comfort of the public and the welfare of match officials and participants.
- 12.2. Each venue is to use the **NRL Preferred Facilities Guidelines – State Level** as a point of reference and preferred standard for Statewide Competition Clubs.
- 12.3. Each venue shall be required to provide as a minimum standard the following amenities and services;
- Lockable separate home and away team dressing room. These dressing rooms shall have toilet and shower facilities that meet Australian Health Standards which shall be made available for access at least 40 minutes prior to the kick-off of Hastings Deering Colts, Harvey Norman U19s, Auswide Bank Mal Meninga Cup and Cyril Connell Challenge matches and at least 90 minutes prior to the kick-off of Hostplus Cup and BMD Premiership matches;
  - Lockable Match Officials' dressing room. These dressing rooms shall have a toilet and shower facilities that meet acceptable Australian Health Standards;
  - Adequate Female Dressing Room Facilities if fielding a team in the BMD Premiership or Harvey Norman U19s.
  - Medical Officers room;
  - Drug Testing room;
  - Match Official Match Day Coach room/area away from public;
  - Designated media area;
  - Provision of a covered, elevated and powered area located on or near the halfway line for videography of matches suitable for four people;
  - Provision of an area for broadcast commentary suitable for three people;
  - Adequate power points, radio points and internet connections for use by media from newspaper, radio, magazine and internet outlets.
  - Men's, Women's and Disabled amenities available for public use;
  - Separate canteen and bar facilities;
  - Public address system;
  - Scoreboard;
  - Digital time piece with match time display that counts down in seconds;
  - Ambulance access to the area immediately adjacent to the playing field;



- 12.4. The host club shall provide reasonable quantities of ice, water and lockable storage.

### LIGHTING STANDARDS

- 12.5. The following lighting standards shall be required for training and competition matches:

- Ball and physical training 50 Lux
- Match practice 100 Lux
- Competition Matches 200 Lux

The above information has been extracted from Australian Standard AS 2560 Part 2.3 and the NRL Preferred Facilities Standards – State Level.

### COACHES FACILITIES

- 12.6. During a game coaches are permitted to view the game from their teams' bench, behind the goal posts at the end of the field, or if applicable, in a coach's box. At all times the coach/es must stay an adequate distance from the field of play which is often defined by the red line that runs parallel and 3 meters from the side line.

- 12.7. Team Officials must adhere to requests of Game Day Operations Team members including but not limited to the below;

- Entry or return to the field of play to meet game times
- Return to coaches' box or behind red line
- Inappropriate language
- Interaction with any match officials

- 12.8. When situated near the general public, coaches are always required to respect the Code of Conduct.

### MEDICAL FACILITIES

- 12.9. Each venue shall;

- Contain a table for observing, assessing and treating players with injuries such as minor head injuries, concussion, fractures, lacerations etc;
- Provide facilities for adequate disposal of used materials such as syringes, needles, contaminated waste disposal kit etc;
- Have unobstructed access for any player taken by stretcher from the field.
- Have access to medical supplies and equipment as advised by QRL Chief Medical Officer (CMO) from time to time.
- Contain a spinal stretcher and defibrillator

## 13.FINALS SERIES

### FORMAT

- 13.1. The eight (8) highest ranked teams shall compete in a finals series for the **Hostplus Cup** and the **Hastings Deering Colts**. The top eight (8) finals series of matches shall be:

Week	Game	Match Name	Home Team*	Away Team
1	1	1st Qualifying Final	Team 1	Team 4
1	2	2nd Qualifying Final	Team 2	Team 3
1	3	Elimination Final 1	Team 5	Team 8
1	4	Elimination Final 2	Team 6	Team 7
2	5	1st Semi Final	Loser of Game 1	Winner of Game 3
2	6	2nd Semi Final	Loser of Game 2	Winner of Game 4
2	-	BYE	Winner of Game 1 & Winner of Game 2	
3	7	1st Preliminary Final	Winner of Game 1	Winner of Game 6
3	8	2nd Preliminary Final	Winner of Game 2	Winner of Game 5
4	9	Grand Final	Winner of Game 7	Winner of Game 8

\*Broadcast opportunities to a broader audience will be considered when allocating finals match venues.

\*\*QRL has final say in determining venues and time to suit broadcast schedule.

- 13.2. The four (4) highest ranked teams shall compete in a finals series for the **BMD Premiership**. The top four (4) finals series of matches shall be:



Week	Game	Match Name	Home Team	Away Team
1	1	1st Qualifying Final	Team 1	Team 4
1	2	2nd Qualifying Final	Team 2	Team 3
2	3	Grand Final	Winner of Game 1	Winner of Game 2

- 13.3. The winners of Pool A & B and the top two (2) teams in Pool C shall compete in a finals series for the **Auswide Bank Mal Meninga Cup**. The four (4) team finals series matches shall be:

Week	Game	Match Name	Home Team	Away Team
1	1	1st Qualifying Final	Winner Pool A	Winner Pool B
1	2	2nd Qualifying Final	Team 1 Pool C	Team 2 Pool C
2	3	Grand Final	Winner of Game 1	Winner of Game 2

- 13.4. At the conclusion of the premierships rounds, if two (2) or more teams are equal on competition points, the final series rankings will be determined according to the following criteria.

- The greater positive difference between points scored for and against, then if equal
- The greater percentage of points scored for and against, being determined by:

$\frac{\text{Points scored for} \times 100}{\text{Points scored against} \times 1}$

then if equal,

- The most tries scored, then if equal
- The most goals kicked, then if equal,
- The most drop goals kicked, then if equal,
- By the toss of a coin.

- 13.5. Notwithstanding broadcast opportunities, the venues for **Hostplus Cup** finals series matches will generally be determined as follows;

Week	Game	Match Name	Host Rights
1	1	1st Qualifying Final	Team 1
1	2	2nd Qualifying Final	Team 2
1	3	Elimination Final 1	Team 5
1	4	Elimination Final 2	Team 6
2	5	1st Semi Final	Highest ranked loser Week 1
2	6	2nd Semi Final	Highest ranked loser Week 1
3	7	1st Preliminary Final	Highest ranked winner from Week 1
3	8	2nd Preliminary Final	Highest ranked winner from Week 1
4	9	Grand Final	QRL

*\*Broadcast opportunities to a broader audience will be considered when allocating finals match venues.*

*\*\*QRL has final say in determining venues and time to suit broadcast schedule.*

- 13.6. Hastings Deering Colts finals series matches will generally be allocated to Hostplus Cup finals series venues regardless of team rankings or at the complete discretion of the Competitions Manager.
- 13.7. BMD Premiership, Harvey Norman U19, Auswide Bank Mal Meninga Cup and Cyril Connell Challenge finals series match venues will be at the complete discretion of the Competitions Manager.
- 13.8. Host venues shall receive four (4) new Match Footballs for each competition hosted during the final series.

### EXTRA TIME

- 13.9. If scores are equal at the conclusion of normal time in any Finals Series match, then in such matches a period of Golden Point extra time shall follow.
- 13.10. A coin toss to be conducted between the referee and the two (2) captains as per the Laws of the Game to determine commencement of extra time.
- 13.11. Five (5) minutes to be played initially and then if no point or points have been scored then both teams will **immediately** change ends, the receiving team in the first half will kick off in the second half and then play shall continue on an unlimited time basis until the first point or points have been scored.



- 13.12. In such extra time, the first scorer of any point or points (e.g. field goal, penalty goal or try) will immediately be declared the winner.
- 13.13. If a try is scored in extra time the conversion kick will not be permitted.
- 13.14. For matches that go into extra time, each team will receive two (2) interchange cards back from the Interchange Official. If there are any used cards from regular time, these numbers must be used first.
- 13.15. HIA Free Interchanges do not apply in extra time as they are considered a normal interchange.
- 13.16. Each team will receive back one (1) Blue Sports Trainer card to enter the field.

## 14. GAME DAY OPERATIONS TEAMS

- 14.1. The Game Day Operations team consists of the following personnel appointed by the QRL unless otherwise stated:
- QRL Ground Manager
  - QRL Interchange Official
  - QRL HIA Official/Standby Referee
  - QRL Game Day Doctor
  - Timekeeper (appointed by the Host Club)
  - Public Announcer (appointed by the Host Club)
  - Sin Bin Operator (appointed by the Host Club)
  - Game Day Operations support (appointed by the Host Club)
- 14.2. The role of the Game Day Operations team is to coordinate all Statewide Competitions Operations Manual requirements and enforce compliance on game day.
- The QRL Ground Manager will lead the game day operations team and work alongside the Club Game Day Operations support.
- 14.3. The function of a QRL Ground Manager appointed by the QRL is to:
- Ensure that all relevant Rules of the QRL are enforced whilst offering assistance to the competing clubs and match officials as necessary.
  - Enter and ensure all team list and scoring data is recorded correctly for each appointed match.
  - Ensure that the QRL Game Day Operations team have entered and facilitated all Interchanges, HIA's, Sin Bin's and Send Offs correctly.
- 14.4. QRL Ground Manager must arrive 90 minutes prior to the first kick off.
- 14.5. All other Game Day Operations team members must arrive at the ground at least 30 minutes prior to the start of the first appointed match.
- 14.6. All QRL Statewide Competitions clubs will be provided Club Equipment by the QRL for use by the QRL Game Day Operations Team appointed to their venue. This equipment will be utilised by the QRL Game Day Operations Team to record team lists, on-field incident reports, pre-and post-game inspection reports, HIA's and match results. These iPads remain the property of the QRL.
- 14.7. The appointed QRL Ground Managers on behalf of the QRL Game Day Operations Team must complete a full report including a Facilities and Safety Check, Club Equipment and Field Equipment check, compliance check and note all discrepancies to the QRL using the relevant reporting system.
- 14.8. QRL Game Day Operations team will be issued with distinctive clothing which must be worn when on duty.

## 15. GROUND MARKINGS & DIMENSIONS

- 15.1. The host club is responsible for having its field lines marked and painted in strict accordance with this manual.
- 15.2. Each venue's playing surface shall include the following grid line markings:
- 10m;



- 15.3. The grid line marking shall be unbroken lines, white in colour and 10cm in width except 40m line (red).
- 15.4. Where possible, an unbroken red line must be marked 3m and parallel to the touchline closest to where team benches are located. All coaches and their staff must remain behind this line.
- 15.5. Each venue's playing surface may include distance markings. Where the home team elects to include distance markers they shall be placed at the following lines, are to be white in colour and 2.0m in height:
  - 10m;
  - 20m;
  - 30m; and
  - 40m.
- 15.6. Each venue's playing surface shall also include 10m and 20m lines. Such lines will be marked both 10m and 20m in from the touchline, are to be 10cm in width, white in colour and to a length of five (5) metres (2.5m either side of the cross line for free kicks and 5m between the cross lines for scrum marks).
- 15.7. The broken lines in the diagram shall consist of marks or dots on the ground not more than 2 metres apart.
- 15.8. All transverse lines must be marked across the full width of the field.
- 15.9. Sponsors logos for grass signage shall be positioned in accordance with the QRL Brand Guidelines relevant to the year of competition.
- 15.10. These provisions set out the official markings and dimensions of the playing surface for all competition matches as per diagram below.



## 16. HEAT POLICY

- 16.1. For any match during any of the Competitions, if the prevailing weather conditions necessitate some relief from the normal playing conditions, the following concessions may apply for that particular match;
- All matches shall have a compulsory drinks break as described below;
  - Match Officials will call 1-minute "time-out" approximately halfway into each half to allow players to take a fluid break. Players will remain on the field and may only be tended to by the three (3) trainers listed. No coaching staff shall be permitted on the field;
  - The NRL Sports Trainers' National Accreditation Scheme On-Field Policy will be relaxed so that all three (3) trainers may carry water;
  - The half-time interval may be extended and shall be done so after consultation of both the match and team officials.
- 16.2. If in the event of severe heat conditions, and with the approval of the Competitions Manager, the commencement of a match may be delayed.
- 16.3. The implementation of the Heat Policy shall be at the sole discretion of the Competitions Manager (or their nominee).
- 16.4. Trial matches played before the end of February and **kicking off before 4.00pm** will also be subject to the following mandatory conditions:
- Maximum of 60-minute matches played in 15-minute quarters
  - Three (3) Sports Trainers allowed to run water as per above

## 17. INSURANCE

- 17.1. The Club shall hold at least the minimum cover of insurance for each team that participates in the competitions as outlined in the QRL Insurance Handbook.
- 17.2. The Club shall hold a valid certificate of currency for public liability insurance to the value of not less than \$20 million.
- 17.3. Players must complete and submit a QRL Train & Trial Agreement Form to the email [contracts@qrl.com.au](mailto:contracts@qrl.com.au) if they are not currently registered with the club they are trialling for (in the current season).

### **HARVEY NORMAN U19S / AUSWIDE BANK MAL MENINGA CUP / CYRIL CONNELL CHALLENGE ONLY**

- 17.4. Players and team officials provided they hold a position and are registered with their Primary Club shall be covered by Insurance to the level effected by that Primary Club.
- 17.5. Where a team official does not hold any such position, the Club / Local League must ensure that the minimum QRL Insurance Cover is provided and the Official is informed accordingly.
- 17.6. The Club shall ensure that all venues nominated to host matches has, at a minimum, \$20 million Public Liability Insurance cover for such venues.

## 18. INJURY REPORTING / WORKPLACE HEALTH AND SAFETY

- 18.1. In the event of a serious injury to a player, spectator, or any other persons attending a game of rugby league it may be necessary to report the incident to Workplace Health and Safety (refer to Part 3 Incident Notification of the [Work Health and Safety Act 2011](#)). This act applies to persons conducting business and provides specific requirements in respect of notifiable incidents that occur in the conduct of that business.
- 18.2. In most cases the act will have no application however, there are severe penalties for people who fail to comply with health and safety duties. Thus, all incidents of serious injury should be recorded, and a summary referred to the Competitions Manager as soon as practicable after the event.
- 18.3. Regarding incidents that require reporting, see link to the online form [Work Cover QLD Incident Notification Form](#).
- 18.4. All clubs are encouraged to record all player's injury in the QRL supplied Athlete Management System (AMS). The aim is to establish patterns, level of cover and potential insurance premium reductions.





## 19.MATCH FOOTBALLS

- 19.1. Only official QRL Rebel competition footballs are to be used during Hostplus Cup fixtures and trials. They are to be in a clean state and with no additional markings on them.
- 19.2. Only official QRL Hastings Deering competition footballs are to be used during Hastings Deering Colts fixtures and trials. They are to be in a clean state and with no additional markings on them.
- 19.3. Only official QRL Rebel competition footballs are to be used during BMD Premiership, Harvey Norman U19, Auswide Bank Mal Meninga Cup and Cyril Connell Challenge fixtures and trials. They are to be in a clean state and with no additional markings on them.
- 19.4. Twenty (20) QRL Rebel competition footballs are provided free of charge by the QRL to each Club competing in the Hostplus Cup.
- 19.5. Fifteen (15) Hastings Deering competition footballs are provided free of charge by the QRL to each club competing in the Hastings Deering Colts competition.
- 19.6. Fifteen (15) QRL Rebel competition footballs are provided free of charge by the QRL to each club to compete in the Harvey Norman U19, Auswide Bank Mal Meninga Cup and Cyril Connell Challenge competitions.
- 19.7. Fifteen (15) QRL Rebel competition footballs are provided free of charge by the QRL to each club competing in the BMD Premiership competition.
- 19.8. Three (3) new footballs must be introduced after every second round of home matches i.e. 1<sup>st</sup>, 3<sup>rd</sup>, 5<sup>th</sup>, 7<sup>th</sup> and 9<sup>th</sup> home matches.
- 19.9. Home team Club Game Day Support Staff are to ensure they have ready access to footballs on match day.
- 19.10. The requirement for football pressure is 8-10 pounds per square inch (psi) or 5.5-6.5 kpi. The upper (10psi) and lower (8psi) guides are given to ensure correct pressure depending on the match day's prevailing weather conditions.
- 19.11. At the end of each half and each match, match officials will return footballs to the match official's room and ball persons will collect the footballs prior to the commencement of the second half or the next match.
- 19.12. Match balls must always be clean with clear logos visible.
- 19.13. The QRL Ground Manager and the Match Officials must check the condition of the match balls prior to the commencement of the match.

## 20.MATCH OFFICIALS

- 20.1. The Match Officials for each competition will be appointed by the QRL who will also be responsible for the payment of those officials.
- 20.2. The Home Team shall be responsible for providing adequate security for the Match Official's dressing room, their entry to and exit from the playing field and venue.
- 20.3. Under no circumstances are Match Officials to be approached, questioned, or harassed in any way by club officials, coaching staff (incl. sports trainers), players or spectators either before, during, or after a match.
- 20.4. Under no circumstances on match day are Match Officials to be approached by a coach or a member of a clubs coaching staff prior to the game to discuss any matter relating to an upcoming match.
- 20.5. The Standby Referee will act as the HIA Official at all appointed matches. In lieu of a Standby Referee the Interchange Official and/or QRL Ground Manager will act as the HIA Official.
- 20.6. All issues regarding the performance of the Match Officials shall be lodged in writing to the QRL State Match Officials Manager prior to 9am on the second business day following the match, accompanied by specific timings of such complaints.

## 21.MATCH REPORTS

- 21.1. The QRL Ground Manager shall be responsible for the completion of the match report after consultation with all Game Day Operations Staff and the recording of match results through the game day management system apps.



- 21.2. All QRL Statewide Competitions clubs will utilise the three (3) iPads provided by the QRL for use by the QRL Game Day Operations Staff assigned to their venue to record team lists, on-field incident reports, pre-and post-game inspection reports, HIA's and match results. These iPads remain the property of the QRL.
- 21.3. Each club's final team listing must be completed, through the NRL Sideline app, one hour prior to the advertised kick-off time and provided to the QRL Ground Manager.
- 21.4. The QRL Ground Manager in conjunction with [section 14](#) shall;
- Lodge, via the game day management system apps, the full time scores, the individual match scorers, any dismissed and/or reported players, player of the year points and the Ground Managers report.
  - Any technical difficulties that prevent lodgement through the game day management system need to be addressed and resolved immediately. Contact game day management system weekend support.

## 22.MATCH REVIEW / JUDICIARY

The following procedure is to be followed for all match day incidents;

- 22.1. All Match Officials must submit On-Field Incident Reports to the QRL (via relevant reporting system) immediately upon completion of the relevant match.
- 22.2. The QRL Match Review Committee will meet at 4.30pm on the first business day following the previous round (generally Monday).
- 22.3. Clubs must submit all incidents that they wish to be reviewed by the Match Review Committee to the QRL via Hudl no later than 2.00pm on the first business day following the match.
- 22.4. All charges by the Match Review Committee will be issued in writing via email to the Coach and CEO of the Club of the offending player by no later than 12.00 noon on the second business day (generally Tuesday).
- 22.5. Players / Clubs have until 8.30am on the third business day following the match to lodge their election to the relevant charge (generally Wednesday).
- 22.6. If the QRL has not received notification from the Player / Club within the required timeframe, it is deemed that the Player / Club has elected to accept the decision of the Match Review Committee and taken the Early Guilty Plea.
- 22.7. Any charges that may be contested or referred directly to the Judiciary will generally be held on Wednesday evening.
- 22.8. For further information, please refer to the [NRL Judiciary Code of Procedure – QLD Edition](#) on the QRL website.

## 23.MATCH TIME

- 23.1. Match days and times will be determined and published by the QRL.
- 23.2. Once set, requests for changes to match days and times may be made up to twenty-eight (28) days prior to the scheduled match.
- Any match alterations inside of twenty-eight (28) days shall require the approval of the opposition club and QRL, which shall not be unreasonably withheld.
  - Any additional cost incurred due to granting an alteration in accordance with [23.2](#) shall be the responsibility of the home team.
- 23.3. Curtain raiser fixtures, or similar, must be scheduled to finish at least fifteen (15) minutes before advertised kick-off times.
- 23.4. Each Hostplus Cup and Hastings Deering Colts match shall be played in two (2) equal periods of forty (40) minutes with a ten (10) minute interval between those periods for half time.
- 23.5. Each BMD Premiership and Auswide Bank Mal Meninga Cup match shall be played in two (2) equal periods of thirty-five (35) minutes with a ten (10) minute interval between those periods for half time.
- 23.6. Each Harvey Norman U19s and Cyril Connell Challenge match shall be played in two (2) equal periods of thirty (30) minutes with a ten (10) minute interval between those periods for half time.



- 23.7. Time off, as indicated by the match official, during those periods shall be permitted.
- 23.8. Suggested minimum time allocations between matches and example kick off times are as per below – this allows for time off, QRL Ground Managers to ensure correct team line ups, videographers time to change over etc:

Cyril Connell Challenge → Harvey Norman U19's	80 minutes
Harvey Norman U19's → Auswide Bank Mal Meninga Cup	80 minutes
Auswide Bank Mal Meninga Cup → Hastings Deering Colts	90 minutes

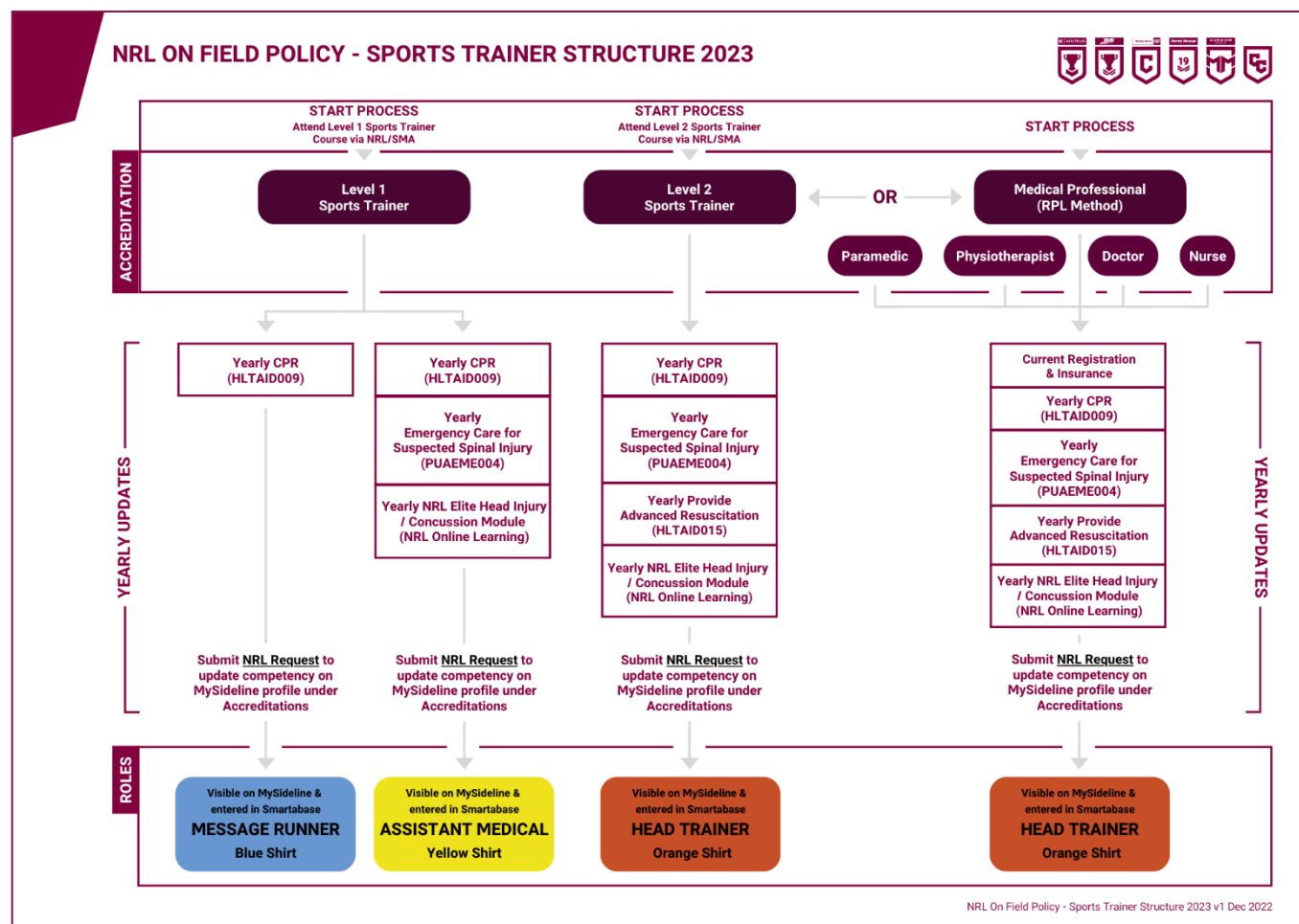
Hastings Deering Colts → Hostplus Cup/BMD Premiership	110 minutes
BMD Premiership → Hostplus Cup	100 minutes
Hostplus Cup → following match	120 minutes

**Example Kick Off Times – Minimum break between matches**

Cyril Connell Challenge	9.00am
Harvey Norman U19's	10.20am
Auswide Bank Mal Meninga Cup	11.40am
Hastings Deering Colts	1.10pm
BMD Premiership	3.00pm
Hostplus Cup	4.40pm
Post Hostplus Cup match	6.40pm

## 24.ON-FIELD POLICY - PERFORMANCE LEVEL

All Statewide Competitions operate under the “Performance” Level of the [NRL On-Field Policy](#).



- 24.1. A LEAGUESAFE qualification is **no longer sufficient accreditation** to access the field of play in any QRL Statewide Competitions.



24.2. For all QRL Statewide Competition matches it is a requirement that all trainers are registered on the National Registration Database (MySideline) and a minimum NRL Level 1 or Level 2 Sports Trainer accreditation is attained along with the relevant annual courses depending on the role. [Refer to the NRL On Field Policy – Sports Trainer Structure 2023 for minimum qualifications for each role.](#)

24.3. All trainers must be submitted to the QRL for accreditation checks via the relevant platform (Smartabase) prior to acting in the respective role.

### **SPORTS TRAINERS ROLES / TREATMENT OF INJURED PLAYERS**

24.4. Each trainers name is to be recorded on the NRL Team List App (NRL Sideline) for each Match with the trainer's name corresponding with the colour worn on-field.

24.5. Each team may engage and use a maximum of three (3) trainers during Matches – one (1) Level 1 Sports Trainer (Blue – Message Runner), one (1) Level 1 Sports Trainer (Yellow – Assistant Medical) and one (1) Level 2 Sports Trainer (Orange – Medical). Under no circumstance are there to be two of the same colour shirts for each match.

24.6. In no case shall the Head Coach of a Club act as a trainer in any Match.

24.7. Sports Trainers must wear appropriate enclosed footwear and are to be identified with the below coloured shirts on match day.

- Blue Shirt – with Sports Trainer labelled on shirt
- Yellow Shirt – with Sports Trainer labelled on shirt
- Orange Shirt – with Head Trainer labelled on shirt

24.8. In the event of a clash of trainer shirt colours with either competing Team jerseys, in Liaison with the Match Officials and QRL Ground Manager on-field personnel may wear another colour, HOWEVER the coloured shirt must not equate to a level above the persons level of accreditation.

24.9. The over-riding responsibility of Sports Trainers is to care for the health, welfare and safety of all Players under their care and within the bounds of their training and expertise. Sports Trainers have primary responsibility for the immediate on field management of injured Players.

24.10. In all cases when trainers enter the field of play to either attend to an injured Player, carry water, or deliver individual messages, they must immediately leave the field once their assigned task has been completed and return to the Player's bench. Trainers must remain within the bench area until their Team regains possession or until they accompany an interchange Player and the interchange official to the touchline in preparation to effect an interchange. There are no other circumstances under which it is permissible for trainers to move away from the bench area.

24.11. At all times Trainers must enter and leave the field as quickly as possible (i.e. running) without interfering with play or running behind the opposition Team's defensive line.

24.12. Trainers are not permitted on the field during scrums except in the case of a serious injury in which case the Orange Trainer (Medical) may attend. Once the scrum has been called, all other trainers on the field must leave immediately.

24.13. Each team may use a maximum of two (2) sports trainers on the field of play during general play at any one time (unless otherwise sanctioned by the referee). During stoppages each team may use a maximum of three (3) sports trainers on the field of play.

24.14. Trainers must not at any time enter the line of sight of a Player when he/she is attempting a kick for goal, or do anything which may in any way unnecessarily interfere with or distract an opposition Player whilst he/she is participating in the Match or constitute some disadvantage to the opposing Team.

24.15. Under no circumstances are trainers permitted to approach or become involved in an altercation or melee involving Players from either competing Team (unless an injured/ill player needs shielding from possible further harm). This includes not attempting to separate or restrain Players who may be attempting to become involved in the incident.

24.16. If any on-field personnel abuse their roles or behave in a manner contrary to the NRL ON-FIELD POLICY or QRL CODE OF CONDUCT or bring the game of Rugby League into disrepute and/or their team / club into disrepute, they may be subject to sanctions and/or disciplinary action, up to and including removal from the NRL National Database.

24.17. Each player shall complete the NRL Medical Advice Card before their first training or playing commitment. This will be the responsibility of the designated Accredited NRL Sports Trainer to ensure all cards are completed and kept up to date. As part of the Club's duty of care, this process should be fully supported by Club Officials. All Privacy Laws must be adhered to.



- 24.18. All injuries / illnesses assessed by the qualified Sports Trainer must be recorded in the NRL Injury Report Booklet; and entered in the relevant QRL supplied Athlete Management System (Smartabase).
- 24.19. If an Accredited NRL Level 1 or Level 2 Sports Trainer is not in attendance, the game(s) shall not commence under any circumstances until such (qualified) person is available.
- 24.20. **It is mandatory that a Medical Practitioner (Doctor) be in attendance at all QRL Statewide Competition matches, for a game to commence. If a Doctor is not in attendance, the Competitions Manager must be notified Immediately.**

## **SPORTS TRAINERS ON-FIELD ROLES AND RESPONSIBILITIES**

### **Orange Trainer – (Medical)**

- Is allowed unlimited access to the playing field to attend to injured Players
- May provide fluids to Players when their Team is in possession of the ball
- Must leave the playing field immediately once they have treated an injured Player and only monitor players from the sideline
- Is the only trainer qualified to assess players for HIA and if player requires removal from the field must provide a comprehensive verbal report to the Game Day Doctor on observed symptoms or signs
- Must not carry messages
- Is allowed to be involved in the **on-field** interchange process whilst their Team is in possession of the ball

### **Yellow Trainer – (Assistant Medical)**

- May sit with the Head Trainer but can only enter the field of play as provided in (2) below and in the following emergencies at the direction of the Head Trainer
  - To help the Head Trainer assist an injured Player from the field
  - To treat an injured Player if there is more than one injured Player and the Head Trainer is already occupied
- Is not to carry water unless a try has been scored or the two (2) Club doctors of the participating Clubs agree that the extreme weather conditions require each Team to have an additional water carrier. If competing Clubs cannot agree, the NRL Ground Manager will make the final decision on whether additional water carriers are permitted. If agreed, the Yellow Trainer's duties are limited to carrying water when their Team is in possession.
- Must not carry messages
- May refill drink containers and offer other assistance off the field of play
- Is allowed to be involved in the **off-field** interchange process (i.e. to assist the QRL Interchange official)

### **Blue Trainer – (Message Runner)**

The Blue (Messages) Trainer's duties are limited to:

- Interchange of Players
- Provision of water
- Carrying messages to individual Team members
- Is allowed access to the playing field:
  - When facilitating an interchange of Players, refer to [27. Replacements \(Interchanges\)](#)
  - When a try has been scored
  - During a time-out called by the Referee for an injury
  - During a drop out
  - On three (3) occasions per half to carry messages to individual Team members when their Team is in possession
- Must enter and leave the playing field without interfering with play
- Must not give general messages to the Team or otherwise assist in the task of coaching (save for the carrying of messages to individual Team members) while play is progressing
- When facilitating an interchange of Players, Blue Trainers must only access the playing field when the Player entering the game is with the QRL Interchange Official and about to take the field. The Blue Trainer must immediately leave the field of play once the interchange has been completed.
- Each Blue Trainer will be supplied with three (3) cards for each half. On each occasion Blue Trainers must hand a card to the a QRL Ground Manager or QRL Interchange Official prior to entering the field of play. Blue Trainers must only enter the field of play after their Team gains possession of the football and leave the field at the completion of the 4th tackle, immediately returning to the Team bench area (i.e. running) without interfering with play or running behind the opposition Team's defensive line.

## **25.PUBLIC ANNOUNCEMENTS**

- 25.1. No public announcements are permitted whilst a player is preparing, or in the process of, kicking for goal.
- 25.2. No public announcements are permitted in relation to decisions or the performance of the match officials.
- 25.3. No public announcements are permitted which may be considered derogatory to any club, player, official, spectator and/or to the game.



## 26.REGISTRATIONS

### BREAKDOWN OF REGISTRATION REQUIREMENTS FOR STATEWIDE COMPETITIONS

Competition	Registration Notes
NRL	Register player as <b>Player Tackle</b> to NRL Club (this will be the players Primary Club)  To play Statewide Competitions players must permit down to Statewide Competition clubs
Hostplus Cup	Register player as <b>Player Tackle</b> to Statewide Competition Club (this will be the players Primary Club)  To play Local League Players must permit down to local league clubs
BMD Premiership	Register player as <b>Player Tackle</b> to Statewide Competition Club (including those under 18 with exemptions)  To play Local League Players must permit down to local league clubs
Hastings Deering Colts	Register player as <b>Player Tackle</b> to Statewide Competition Club (this will be the Players Primary Club)  To play Local League Players must permit down to local league clubs
Harvey Norman U19	Register player first as <b>Player Tackle</b> to local league club for insurance purposes  Register player as <b>Player Representative</b> to Statewide Competitions Club <i>If a player completes their obligations in the Harvey Norman U19 and is then considered for selection in a higher grade (BMD Premiership), they must register as <b>Player Tackle</b> to the relevant Statewide Competitions Club and sign a QRL Player Agreement.</i>
Auswide Bank Mal Meninga Cup	Register player first as <b>Player Tackle</b> to local league club for insurance purposes  Register player as <b>Player Representative</b> to Statewide Competitions Club <i>If a player completes their obligations in the Auswide Bank Mal Meninga Cup and is then considered for selection in a higher grade (Hastings Deering Colts or Hostplus Cup), they must register as <b>Player Tackle</b> to the relevant Statewide Competitions Club and sign a QRL Player Agreement.</i>
Cyril Connell Challenge	Register player first as <b>Player Tackle</b> to local league club for insurance purposes  Register player as <b>Player Representative</b> to Statewide Competitions Club

### HOSTPLUS CUP, BMD PREMIERSHIP & HASTINGS DEERING COLTS

- 26.1. All Hostplus Cup, BMD Premiership and Hastings Deering Colts players must sign a QRL Player Agreement via DocuSign. A digital copy must then be lodged with the QRL within ten (10) days of signing via Smartabase and prior to the player taking the field in any capacity.
- 26.2. All Hostplus Cup, BMD Premiership and Hastings Deering Colts players must also be registered via the National Registration database (MySideline) prior to the player participating in any match.
- 26.3. These players can then be granted a Portability Permit back to their affiliate clubs.
- 26.4. If players aged 21 and under are selected from outside the club's catchment areas listed in [Appendix 1](#) and on another clubs Protected Player List, a Development Fee may be payable prior to that players registration being finalised with their new club.
- 26.5. In conjunction with Clause [26.3](#), QRL Rule 4.1.6 (Transfer of Junior Registration) shall take effect. A Club shall not register more than five (5) players in any one age group who were registered outside of the catchment areas in [Appendix 1](#) in the previous year. Of these five (5) players, no more than two (2) shall be from any one (1) Junior Rugby League Football Club. A Club may seek exemption from this rule from the relevant Regional Manager where it considers there are Special Circumstances as defined in the QRL Rules.
- 26.6. Final squad sizes of the below number of players for each competition are permitted. Larger squads are permitted to complete a pre-season and participate in trials. However, Contracts submitted (via Smartabase) will only be accepted for the below number of players for each squad.

Hostplus Cup	34 players
BMD Premiership	30 players
Hastings Deering Colts	32 players
Harvey Norman U19s	30 players
Auswide Bank Mal Meninga Cup	30 players
Cyril Connell Challenge	30 players



- 26.7. Each player must complete the State of Origin Eligibility component of their registration via the National Registration database (MySideline) or relevant QRL platform (Smartabase).
- 26.8. A player is only deemed to be correctly registered when they are visible in the QRL's current Game Day Management System.
- 26.9. The above squad lists can only have a player added in the event of a season ending injury to an existing member with the submission of relevant medical confirmation and upon application to the Competitions Manager.
- 26.10. In cases where a Statewide Competition Club is a single NRL affiliate, the number of players eligible to participate in any given week of a QRL Statewide Competition is limited to six (6) players in any single competition.
- 26.11. In cases where a Statewide Competition Club is one of multiple affiliates to an NRL Club, the following conditions will apply subject to the affected Club/s providing QRL with suitable evidence that players allocated from the NRL Affiliate are distributed equally across all affiliates no later than March 1 of each Football Year.
- **3 Hostplus Cub Affiliate Model** - An NRL club can allocate players from their top 36 NRL contact list as follows.
    - Affiliate Club #1 – 40% (up to 16)
    - Affiliate Club #2 – 30% (up to 10)
    - Affiliate Club #3 – 30% (up to 10)
    - The allocation is now on an adequate basis not an "equal". Player allocations are made at the start of the season and players are to remain / play at their allocated club for the full season.
  - **2 Hostplus Cub Affiliate Model** - An NRL club can allocate players from their top 36 NRL contact list as follows
    - Affiliate Club #1 – 50% (up to 18)
    - Affiliate Club #2 – 50% (up to 18)
    - The allocation remains on an equal basis to be approved by the QRL. Player allocations are made at the start of the season and players are to remain / play at their allocated club for the full season.
  - **1 Hostplus Cub Affiliate Model**
    - As per rule [26.10](#)

## COACH, TRAINER & VOLUNTEER REGISTRATION

- 26.12. The club shall be required to register all coaches, trainers and volunteers (Managers etc) on the National Registration database prior to the commencement of the competition.
- 26.13. All coaches and trainers shall be listed via the QRL's relevant online portal (currently Smartabase) and shall be lodged with the QRL no later than **December 1 each year**.
- 26.14. All Head Coaches shall be required to have attained a minimum Senior Club Coach or High Performance Coach accreditation for all QRL Statewide Competitions and are required to be correctly accredited in accordance with the NRL Coach Accreditation Scheme prior to the commencement of any competition.
- 26.15. All Assistant Coaches shall be required to have attained a minimum International Games Coach or Club Coach (or Community Coach 16-18s or Community Coast 19+) accreditation for all QRL Statewide Competitions and are required to be correctly accredited in accordance with the NRL Coach Accreditation Scheme.
- 26.16. If coaches and trainers are found to be not correctly accredited, their registration may not be accepted, and they will be unable to coach or perform the role of a Coach or Sports Trainer until suitably accredited.

## 27.REPLACEMENTS (INTERCHANGE)

- 27.1. An interchange is the replacement of one (1) player in a team for another during the match.
- 27.2. Only thirteen (13) players from each team may be on the field of play at any one time.
- 27.3. All teams are required to list four (4) players as interchange players on their official team list.
- 27.4. A limited interchange system is used in all Statewide Competitions.
- Hostplus Cup, Hastings Deering Colts and Cyril Connell Challenge teams may use up to a maximum of eight (8) interchanges in ordinary time during a match.





- BMD Premiership, Harvey Norman U19s and Auswide Bank Mal Meninga Cup teams may use up to a maximum of ten (10) interchanges in ordinary time during a match.
- 27.5. At the start of the season each team will be provided with a set of official interchange cards numbered 1-8 (including HIA cards, free interchange cards and 18<sup>th</sup> player replacement cards). BMD Premiership, Harvey Norman U19s and Auswide Bank Mal Meninga Cup teams will receive 1-10.
- 27.6. It will be the responsibility of each team to have these cards available for use during all matches.
- 27.7. For matches that go into extra time, each team will receive two (2) interchange cards back from the QRL Interchange Official. If there are any used cards from regular time, these numbers must be used first.
- 27.8. A replaced player must have left the field of play prior to the interchange player taking their place on the field.
- 27.9. If a team elects to interchange a bleeding Player who leaves the field this interchange will be included for the purposes of calculating the number of interchanges pursuant to [27.4](#).
- 27.10. If a Player is fouled by an opponent who is in consequence dismissed from the field or sin binned and the fouled Player is caused to leave the field as a direct result of an injury sustained in that incident, this interchange will **not** be included for the purposes of calculating the number of interchanges pursuant to [27.4](#) provided that it is made without delay and, in any case, by the time the referee has acted on the incident.
- 27.11. The subsequent interchange, whether it is the return of the fouled player or another player, of the team of the fouled player will **not** be included for the purposes of calculating the number of interchanges pursuant to [27.4](#).
- 27.12. An Interchange Official will be appointed by the QRL to manage the interchange process for each team, however, they will not be responsible for ensuring that clubs comply with these provisions. In proceedings with respect to any breach by a club of these provisions, it will not be a defence to that breach to assert or maintain that the QRL Interchange Official gave a particular direction or that they erred in some way.
- 27.13. The function of an Interchange Official employed by the QRL is to;
- Ensure that all relevant Rules of the QRL are enforced whilst aiding the QRL Ground Manager, competing clubs and match officials as necessary.
  - Enter and ensure all interchange, HIA and incident data is recorded correctly for each appointed match.
- 27.14. Should an Interchange Official become aware of a breach of these Replacement / Interchange Provisions, they will address any non-compliance firstly with the Team Manager and QRL Ground Manager, secondly with the Player and thirdly, submit a written report to the Competitions Manager (or their nominee).
- 27.15. Each team will always be responsible for ensuring compliance with these Replacement / Interchange Provisions.

### INTERCHANGE PROCESS

- 27.16. Before the commencement of the match the Interchange Official will hand the Interchange cards to each team.
- 27.17. As each interchange is to be made, the interchange player must report to the Interchange Official with an interchange card in sequential ascending numerical order (i.e. 1st interchange will hand over No. 1, 2nd interchange will hand over No. 2, etc. The last interchange player will hand over No. 8) for presentation to the Interchange Official. If a 'free' interchange is permitted under Rule [27.10](#) the interchange player must present the free interchange card to the Interchange Official. In all cases, it is the interchange player who must personally present the card to the Interchange Official (i.e. Trainers are not permitted to carry or present the card on behalf of a player).
- 27.18. The interchange player must retain possession of the card until the Interchange Official approves their entry onto the field of play by taking the card from the player after the replaced player has left the field of play. The acceptance by the Interchange Official of the card provides the only valid authorisation for the player to take the field. Unless and until the Interchange Official accepts the card, the interchange player will not have approval to enter the field of play and must not attempt to do so. Interchange players must not under any circumstances pressure the Interchange Official to take the card, irrespective of whether the replaced player has already left the field of play.
- 27.19. If a player reports to the Interchange Official without a card, the player will be sent back to the bench to obtain a card before the interchange will be allowed to proceed.





- 27.20. The Interchange Official will retain all cards until the end of the match to indicate the number of interchanges used by each team. Cards will then be returned to each club.
- 27.21. Only official interchange cards issued by the QRL may be used for the purposes of interchange. If a team loses or damages their cards, the Competitions Manager (or their nominee) must be contacted with a request to issue replacement cards.
- 27.22. An interchange Player must enter the field in an on-side position after reporting to the Interchange Official and after receiving the approval of the Interchange Official to enter the field of play and after the replaced player has left the field of play.
- 27.23. A maximum of two (2) interchange players can report to the Interchange Official at any one time. Other players must remain on the bench until the two interchanges being managed by the Interchange Official have been affected.
- 27.24. Except for scrums (see [27.25](#) below), Interchanges may occur during general play (i.e. whilst the ball is in motion), after any scoring has been completed or if play has been temporarily suspended by the referee (e.g. injury or caution).
- 27.25. In the case of scrums:
- Interchanges will only be permitted at scrums resulting from a touch line stoppage (i.e. a kick finds touch, or a player is tackled into touch), provided that the interchange player is already with the interchange official waiting to go on when the ball or the player crosses the touch line. Trainers will still be responsible for getting the player being replaced off the field before the interchange player can go on. The referee will not call a time-out or delay the recommencement to allow the interchange to take place.
  - Otherwise, Interchanges must not be made after the referee has ordered a scrum until after the scrum has been completed. This applies regardless of whether the referee calls time out for an injury or not. The Player leaving the field may do so at any time, but a player cannot enter the field until the ball emerges from the scrum.

#### HEAD INJURY ASSESSMENT (HIA)

- 27.26. HIA will take place during all Statewide Competition matches. Refer to [Appendix 5](#).
- 27.27. The Standby Referee will act as the HIA Official at all appointed matches. In lieu of a Standby Referee the Interchange Official and or QRL Ground Manager will act as the HIA Official.
- 27.28. In the event of any one or more of the following being observed by the Club Head Trainer, Game Day Doctor, or Game Day Operations Staff during a match, the player must be taken from the field immediately to be assessed by the Game Day Doctor:
- i) clinical features including abnormal neurological signs of a serious or structural head and/or neck injury requiring emergency management and hospital transfer;
  - ii) loss of consciousness or suspected loss of consciousness;
  - iii) no protective action in fall to ground (tonic or floppy; or cervical hypotonia);
  - iv) impact seizure or possible impact seizure, e.g. tonic clonic movements or tonic posturing;
  - v) confusion or disorientation;
  - vi) memory impairment (e.g. failed the Maddocks questions – [Appendix 5](#));
  - vii) motor incoordination (e.g. balance disturbance or possible balance disturbance, clumsiness with upper limbs or in getting up);
  - viii) Player reports significant, new or progressive concussion symptoms;
  - ix) dazed, blank / vacant stare or not their normal self (e.g. no facial expression, no apparent emotion in response to the environment, reduced conscious state (GCS<15), not responding appropriately to those around them including other Players, Match Officials or trainers / medical staff);
  - x) behavioural change atypical of the Player;
  - xi) slow to stand following a possible head injury (1<sup>st</sup> priority is to ensure that there is no neck injury present);
  - xii) loss of responsiveness (Player lying motionless for 2-3 seconds or until support staff arrives); or



xiii) suspected facial fracture.

NOTE: 'Balance disturbance' is defined as when a Player is unable to stand steadily unassisted or walk normally and steadily without support in the context of a possible head injury.

In addition, if the Game Day Doctor or Head Sports Trainer (following a sideline discussion with the Game Day Doctor) forms a clinical impression that the Player appears to display other signs that a head injury may have occurred following trauma / impact, the Player must immediately be taken from the field in a medically appropriate way to be assessed by the Game Day Doctor.

- 27.29. If a player is required to leave the field of play as a consequence of the identification of one or more of these features to complete a Head Injury Assessment (HIA) this interchange will not be included for the purposes of calculating the number of interchanges pursuant to [27.4](#).
- 27.30. The period of time in which the HIA is to take place is to be **no longer and no less** than a period of 15 minutes. To clarify, a HIA player cannot return to the field before 15 minutes has elapsed. The time period is to begin from the time at which the player is in the care of the Game Day Doctor. If the player has been cleared by the Game Day Doctor during the HIA, the player must report to the Interchange Official prior to or at the completion of the 15 minutes HIA to return to the field of play.
- 27.31. A HIA assessed player who is cleared must be the one to return to the field at the end of the 15 minutes **mandatory** period.
- 27.32. The mandatory 15 minutes period will not be assessed against the official match time or clock. The timing of the HIA period will be monitored by the HIA Official (Standby Referee or Interchange Official).
- 27.33. If a player is required to be assessed for a period longer than the specified HIA period, that player would then be adjudicated as an Interchange for the purposes of calculating the number of interchanges pursuant to [27.4](#). The Club will be required to hand over their next interchange card available in sequential order immediately to the Interchange Official.
- 27.34. Any player who is required to leave the field of play for any further HIA in the same match will not be allowed to return to play in that match.
- 27.35. In the event of an on-field incident which has required two players to be taken from the field of play for a HIA, the Game Day Doctor may request from the HIA Interchange Official an additional 10-minute period for one (1) of the HIA players to complete the necessary assessment.
- 27.36. If the player has suffered a concussive injury in an incident that was a consequence of foul play which resulted in the incident being Send Off or Sin Binned, this interchange will take place in accordance with the process pursuant to [27.10](#). The time limit associated with the HIA will not apply.
- 27.37. In the event that a HIA takes place in the 15 to 5 minute period prior to half time, the HIA period will be deemed to have been completed at the end of the half time period. The team must indicate to the HIA or Interchange Official immediately at the completion of half time whether the player is to return to the field of play.
- 27.38. In the event that a HIA takes place in the 5-minute period prior to half time, the HIA period will be determined by the Game Day Doctor and the Interchange Official. The player must return to the field before the 5<sup>th</sup> minute of the second half or it will be counted as an interchange as per [27.4](#).
- 27.39. In the event that a Club has used all of its allocated interchanges whilst a player is completing a HIA, and if that player is unable to return to the field of play at the completion of the HIA, the Club must immediately remove a player from the field of play and complete the match with 12 players.
- 27.40. At the completion of the match, the QRL Ground Manager is required to complete as part of their report to the QRL, details of any player who has completed a HIA during a match. Additionally, the Interchange Official will record the timing of each HIA in the relevant recording system.
- 27.41. The Game Day Doctor is to complete a HIA via the relevant QRL Concussion Assessment tool on any player who is suspected of suffering from a potential concussive episode. The Game Day Doctor is to add the outcomes and any HIA's to the Ground Managers report.
- 27.42. Clubs must only use HIA for the reasons set out in [27.28](#).
- 27.43. Any Club which is proven to have used a HIA for any reason other than that detailed in [27.28](#) will be deemed to have gained an unfair tactical advantage in the match and be subject to penalty.



27.44. All Clubs and persons bound by these Rules must comply in all respects with the provisions of the following policy statement. A breach of any of the provisions of this Policy may be enforced by the imposition of a penalty or penalties such as fines, suspensions and/or loss of competition points if a contravention of any of these provisions is found to have occurred.

27.45. Game Day Doctor directions take precedence over all others regarding player welfare.

### 18TH PLAYER REPLACEMENT PLAYER

27.46. The 18<sup>th</sup> player replacement player is only applicable for the Hostplus Cup.

27.47. A club can activate an 18<sup>th</sup> player:





- After 2 players from the same side have failed a HIA Test.
- When a player suffers a match ending injury caused by foul play – and the perpetrator has been sin binned or sent off.


27.48. The 18<sup>th</sup> player must be a player currently registered with a Statewide Competitions club and in the club squad list in MySideline. Clubs will be permitted to select an 18<sup>th</sup> player on merit and must identify the player when final team sheets are provided on game day.

27.49. The 18<sup>th</sup> player must always wear the provided colour vest until activated.

27.50. The 18<sup>th</sup> player replacement does not have to be immediately interchanged.

### BREAKDOWN OF REPLACEMENT (INTERCHANGE) CARDS FOR STATEWIDE COMPETITIONS

Card	Usage Notes
	<p><b>ALL Statewide Competitions</b></p> <p><b>Red 'X' Card – used for a player LEAVING the field as a result of a foul play.</b></p> <p>If a Player is fouled by an opponent who is in consequence dismissed from the field or sin binned and the fouled Player is caused to leave the field as a direct result of an injury sustained in that incident, this interchange will <b>not</b> be included for the purposes of calculating the number of interchanges pursuant to <a href="#">27.4</a> provided that it is made without delay and, in any case, by the time the referee has acted on the incident.</p>
	<p><b>ALL Statewide Competitions</b></p> <p><b>Green 'X' Card – used for a player ENTERING the field as a result of a foul play or is the subsequent interchange following a player leaving the field as a result of a foul play.</b></p> <p>If a Player is fouled by an opponent who is in consequence dismissed from the field or sin binned and the fouled Player is caused to leave the field as a direct result of an injury sustained in that incident, this interchange will <b>not</b> be included for the purposes of calculating the number of interchanges pursuant to <a href="#">27.4</a> provided that it is made without delay and, in any case, by the time the referee has acted on the incident.</p> <p>The subsequent interchange, whether it is the return of the fouled player or another player, of the team of the fouled player will <b>not</b> be included for the purposes of calculating the number of interchanges pursuant to <a href="#">27.4</a>.</p>
	<p><b>ALL Statewide Competitions</b></p> <p><b>Red 'HIA' Card – used for a player LEAVING the field for a Head Injury Assessment.</b></p> <p>Card is used when the Orange – Head Trainer or Game Day Doctor indicates that a player is to be removed from the field for a Head Injury Assessment.</p>
	<p><b>ALL Statewide Competitions</b></p> <p><b>Green 'HIA' Card – used for a player ENTERING the field after a Head Injury Assessment.</b></p> <p>A HIA assessed player who is cleared must be the one to return to the field at the end of the 15 minutes mandatory period.</p>

	<p><b><u>Hostplus Cup ONLY</u></b></p> <p><b>Blue 'R' Card – used for an 18<sup>th</sup> player activated by one of the scenarios below.</b></p> <p><b>Scenario 1: Two (2) Failed HIAs</b></p> <ul style="list-style-type: none"> <li>• Two (2) players from the same team fail HIA test</li> <li>• Second player can be ruled out by Game Day Doctor prior to 15min assessment period ending, but proper assessment must be conducted</li> </ul> <p><b>Scenario 2: Fouled Player</b></p> <ul style="list-style-type: none"> <li>• Fouled Player leaves field without delay due to injury (inclusive of HIA injury)</li> <li>• Injury arose from incident involving opposition player</li> <li>• Offender is sin binned or sent off</li> <li>• Free interchange card applies</li> </ul>
---	---

## 28.SALARY CAP / CONTRACTING MODEL

All QRL Statewide Competitions are required to follow the guidelines regarding player payments as contained in [Appendix 4](#).

## 29.SIDELINE AREA AND BENCH LOCATIONS

- 29.1. Both the home and visiting team benches must be on the same side of the field.
- 29.2. Where team benches are located within the playing area (i.e. inside the fence) the following provisions must be adhered to:
  - Adequate seating shall be provided for each team and placed parallel to the touch line. This seating should be of a resilient nature and located as near to the 50m line as possible.
  - Personnel on the bench may comprise only those people directly related to the conduct of the match itself (i.e. coaches, interchange players, trainers, team manager, medical officers).
  - There can be no more than twelve (12) persons on the bench from each team.
  - Orange Sports Trainer and Blue Sports Trainer must sit at opposite ends of team bench.
- 29.3. Under no circumstances will “barracking” or “abuse” from the bench be permitted. This not only refers to abuse, but also to what might be described as offering advice or assistance to the match officials in relation to their performance or how they should be carrying out their duties.
- 29.4. The Host club is asked to provide 4 x chairs placed between the team benches for use by the QRL Ground Manager, Interchange Official, Game Day Doctor and Standby Referee/HIA Official.
- 29.5. The QRL Ground Manager, Interchange Official and Match Officials may request any person on the bench to leave the bench area and may name that person in their Match Report.
- 29.6. Players and officials on the bench must always remain at the bench allocated to their team (except for player warm-ups). Any player(s) warming up must remain at least 1 metre from the field of play.
- 29.7. Whilst team officials are not expected to sit during the entire match, they must not leave this immediate area or approach the field of play under any circumstances. Where possible team officials must remain at least 5 metres from the sideline.
- 29.8. No player or players may temporarily leave the field of play and subsequently re-enter the field of play without the permission of the referee or touch judge.
- 29.9. Under no circumstances is a suspended Player permitted on the sideline or bench area.
- 29.10. No members of the public or any other unauthorised persons are permitted within the playing area (i.e. inside the fence surrounding the field of play).



## 30. SPORTS INTEGRITY AUSTRALIA (SIA)

- 30.1. All QRL Statewide Competitions and its participants are bound by the Anti-Doping Policy of the Australian Rugby League Commission Ltd, as per details below.
- 30.2.
- Anti-Doping Policy of the Australian Rugby League Commission Limited, National Rugby League Limited, the NSWRL, the QRL and our member and sub-member organisations, adopted by the Queensland Rugby League.
  - The above document, in its most current form, is available via the Queensland Rugby League website – About – [Documents and Policies](#). [Direct link to the NRL Integrity Anti-Doping](#).
- 30.3. All players shall be required to complete the relevant (Junior or Senior) mandatory online education module prior to taking the field in any competition match, detailed in [section 36](#).
- 30.4. All clubs must notify SIA of their training schedules in the pre-season and during the season. If training varies in any way from this schedule SIA must be notified via ([national.testing@sportintegrity.gov.au](mailto:national.testing@sportintegrity.gov.au)) and the relevant QRL online platform (currently Smartabase).
- 30.5. Failure to notify SIA of any changes to the clubs training schedule that results in a fine for a "Failed Mission" will be the responsibility of the club.

### PLAYERS WHEREABOUTS

- 30.6. Clubs must provide the following Whereabouts Information, or any other information as requested, to the QRL and relevant Drug Testing Authorities:
- By the first day of every month, each club must provide a current Squad list of Player contact and primary residential address details, including:
    - First and Last Name
    - Residential Address
    - Mobile Phone
    - Email address
  - Clubs must provide a schedule providing time and location details of a week's training, club coordinated activities, competition, travel and accommodation (Team Schedule) by 9am AEST on the preceding Friday.
  - Clubs may provide Team Schedules which cover several weeks in advance, provided always that the details for a particular week are received no later by 9am AEST on the preceding Friday.
  - Any change to a scheduled activity must be communicated to the Drug Testing Authorities at least one (1) hour before that scheduled activity was due to begin. If the rescheduled activity begins before the original scheduled activity, the updated time must be communicated at least one (1) hour before the rescheduled activity commences.
  - At least one (1) hour before a scheduled training or club coordinated activity, clubs must provide a list of Players who will be absent from that Training or Club coordinated activity; and,
  - Player Temporary Address details six (6) days prior to the date the player will be residing at the Temporary Address.
- 30.7. Without limitation, a failure to provide Whereabouts information in the form and within the timeframe specified by the QRL will constitute a breach of the NRL/QRL Rules.

## 31. TEAM LIST SUBMISSION

- 31.1. All Clubs must submit a mid-week team list for each of their teams competing in all Statewide Competitions via Game Day Management System by **1.00pm on the Tuesday** prior to the scheduled fixture. This may be regularly updated until 1.00pm on Tuesday each week.
- Mid-week team list to include 13 on-field players, 4 interchange players and any additional players are named as reserves.
  - Captains must be nominated
- 31.2. The release of teams to media outlets or on any form of media platform by either QRL or the Clubs shall not be permitted prior to 5.50pm on the Tuesday prior to the scheduled fixture.



- 31.3. All clubs must submit a 24-hour team list for each of their teams competing in all Statewide Competitions via Game Day Management System by **8am on the Friday** prior to the scheduled fixture. This will be updated on the website at **9am on the Friday**.
- 31.4. Each player shall take the field in the jersey number that appears in the 24-hour team list regardless of what position the player takes on the field.
- 31.5. On game day, all teams are required to submit a one hour before kick-off team list with the inclusion of three (3) trainers. This submission will be facilitated by the QRL Ground Manager but is the responsibility of each club to ensure it is correctly inputted in the Game Day Management System.
- One hour before kick-off team list to include 13 on-field players, 4 interchange players and **no** reserve players.  
**Only in Hostplus Cup are teams to also nominate 1 reserve/18th player.**
  - Three (3) Sports Trainers must be nominated - one trainer nominated for each respective Sports Trainer shirt colour. If they cannot be selected via the Game Day Management System, QRL Competitions & Innovations Coordinator (or their nominee) must be contacted.
  - Captains must be nominated
- 31.6. If a player listed in the initial team list is subsequently not selected for that match, the replacement player may wear that player's jersey provided the replacement player is not already listed in the initial team list. It is preferable to use another number not already listed in the initial team list (e.g. numbers 18-23).
- 31.7. Ensure suspended or concussion restricted players are not named in the initial line-up. Players unable to play must not be featured in their team's line-up on game day.

## 32.TIMEKEEPING

### OFFICIAL MATCH TIME

- 32.1. It should be noted that the match clock on display at the venue does not necessarily accurately represent the official match time.
- 32.2. It is the responsibility of the home team to provide a Timekeeper/s.
- 32.3. The home team, in conjunction with the visiting team if they so wish, shall be responsible for the keeping of match time. If a visiting team does not nominate anyone for this purpose, they must accept the timing of the home team.
- 32.4. All decisions of the official timekeeper(s) shall be final and not open to review or appeal unless the Competitions Manager, at their absolute discretion, so determines.

### MATCH CLOCKS

- 32.5. Match clocks should be in good working order and showing second hand if analogue or indicating seconds if digital.
- 32.6. All clubs match clocks should be a countdown clock (i.e. 40 minutes to zero)
- 32.7. A back up system should also be available at all venues.

### SIN BIN OPERATORS

- 32.8. Visiting clubs must nominate their personnel for timing of "temporary suspensions" and make themselves known to the QRL Ground Manager prior to the start of the match.
- 32.9. If a visiting club does not nominate anyone for this purpose, they must accept the timing of the home team sin bin operator and QRL Ground Manager
- 32.10. Operators must be provided with time pieces displaying minutes and seconds by their clubs.

### TIMEKEEPING IN RELATION TO MATCH OFFICIALS

- 32.11. When a referee starts play, they will blow their whistle and indicate with one arm above their head and order the ball to be kicked off.
- 32.12. If, for any reason (e.g. an injury or caution), the referee orders time off by indicating with both arms above their head, vertical to their body, timekeepers must immediately stop their watches and time clocks.



32.13. When play is to recommence, the referee will indicate by waving one arm over their head. Timekeepers must recommence match clocks immediately. This procedure is to be carried out throughout the match.

32.14. Timekeepers shall have at least one additional time piece when keeping time for use in the event of the match clock malfunctioning.

### SIRENS

32.15. At the completion of each half, the timekeeper must continue to sound the siren until such time as the match referee signals that they have heard it by raising their arm above their head. The referee will indicate a cessation (after the hooter is blown) by blowing their whistle and waving both their arms across their body.

32.16. If the venue siren fails to operate, the timekeeper must use the standby air horn issued to them. If, for any reason, the referee cannot hear the siren, the timekeeper must immediately alert the QRL Ground Manager and Home Team who shall advise the match officials.

### END OF PLAY

32.17. In all cases, the referee will be the sole judge of when play shall cease after the half or full-time siren has sounded.

32.18. The referee may extend the match to award a penalty or to complete the play currently underway at their discretion.

## 33. TRAVEL LOGISTICS

33.1. The QRL shall be responsible for the management and cost of transport, accommodation and meal allowances for teams travelling to all Statewide Competition and finals series matches as outlined in the Travel Schedule in [Appendix 2](#). (PNG Hunters Excluded)

33.2. Any expenses incurred outside of the items allocated in the Travel Schedule including the cost of team assembly shall be the responsibility of the club.

33.3. The QRL will cover the costs of approved travel for a party of:

Hostplus Cup teams	24 people
BMD Premiership teams	23 people
Hastings Deering Colts teams	23 people
Harvey Norman U19's teams	23 people
Auswide Bank Mal Meninga Cup teams	23 people
Cyril Connell Challenge teams	23 people

33.4. Any club travelling with more than the allocated members shall be responsible for all travel arrangements and associated expenses for those travel arrangements.

33.5. Travel for matches during Country Week will be allocated at the discretion of the Competitions Manager (or their nominee).

33.6. Any club that schedules a match at any venue other than its nominated home venue will be responsible for the cost of all additional travel above the allocated budget at the discretion of the Competitions Manager.

33.7. The Travel Booking Form will be available on **Smartabase** once booked by QRL and prior to **1pm on the Tuesday preceding the match**.

33.8. For all travelling teams in the Hostplus Cup competition and that have matches against the PNG Hunters (in PNG), for the 2023 season. The PNG Hunters will be arranging travel directly with visiting clubs and the travelling party will be defined in [33.3](#).

33.9. All clubs and participants must adhere to current Queensland Government COVID protocols and restrictions.

### AIR TRAVEL

The following rules apply to air travel for the Travelling Party.

33.10. The QRL shall be responsible for the cost of providing the Travelling Party economy class air tickets including all airport departure and arrival taxes.

33.11. The club shall be responsible for the cost of all excess baggage. The QRL will notify the club of the airline's baggage allowances prior to each flight.



- 33.12. The club shall advise the QRL on the Travel Booking Form persons of the travelling party. Such form shall be lodged prior to;
- If flying with **Qantas (QF)** - names must be submitted via the Travel Booking Form on **Smartabase**, no later than **9am on the Friday** in the week prior to the match (e.g. eight days prior to travel). Please note that if names are not supplied in the required timeframe, Qantas will cancel the flights – this is out of Stage & Screen and QRL's control and clubs will be required to pay for new flights.
  - If flying with **Virgin/Jetstar** or any other travelling companies (including Bus/Accommodation), details must be submitted via the Travel Booking Form on **Smartabase** no later than **1pm on Tuesday** week of travel (e.g. four days prior to travel).
- 33.13. Should any players or support staff wish to change flight this is required to be submitted on the Tuesday 1pm. Please note any costs associated with these changes will be on-charged to the club. Minimum charges for flight changes \$80 change fee +\$25-\$35 re-issue fee + any fare difference.
- 33.14. Any name changes (due to injury/or NRL club allocation) between 1pm Tuesday and 5pm Friday (week of travel) must be emailed directly to each club's relevant Stage & Screen representative with the player's name and who they will be replacing in the body of the email (e.g. Danny de Vries out and Kylie Mooney in).
- 33.15. Any changes required inside of 24 hours of scheduled flight and if those changes incur a fee, the additional expenses will be the responsibility of the club.
- 33.16. For any changes after 5pm Friday (day before travel), the club's contact person (as submitted via the Travel Booking Form in Smartabase) must contact **Stage and Screen After Hours on 02 9308 0105** to make the following changes only:
- Flights: Players that are injured or sick and unable to travel, replacement player only (this will be processed as a new ticket)
  - Bus: Change to departure time only
  - Accommodation: Name change only
  - Meals: Change to meal time only
- 33.17. Individual travellers will be entitled to retain, for their own use, any frequent flyer points accrued.
- 33.18. Upgrades from the economy class air tickets provided by the QRL will be at the expense of the club.

## **BUS TRAVEL**

The following rules apply to bus travel for the Travelling Party.

- 33.19. In accordance with the Travel Schedule [Appendix 2](#), the QRL shall be responsible for the cost of providing for the Travelling Party on a coach / bus for the travel from a single nominated venue to the match and return as stated in [33.3](#).
- 33.20. Any additional fees (i.e. cleaning fee / additional stops) charged by the supplier will be at the expense of the club, unless prior approval has been granted by the Competitions Manager (or their nominee).
- 33.21. Any excess seats on the coach / bus may be allocated to additional players, staff or supporters.
- 33.22. The QRL shall be responsible for the cost of providing nominated airport transfers between airport / venue / hotel.

## **ACCOMMODATION**

The following rules apply to accommodation travel for the Travelling Party.

- 33.23. In accordance with the Travel Schedule, the QRL shall be responsible for the cost of providing accommodation for each member of the Travelling Party for the number of nights indicated in the Schedule.
- 33.24. Individual travellers will be entitled to retain, for their own use, any loyalty points accrued.
- 33.25. Upgrades in accommodation will be at the expense of the club.
- 33.26. The accommodation shall include provisions for breakfast. Where breakfast is not provided, an allowance shall be provided in accordance with section [33.32](#).

## **MEAL ALLOWANCES**

- 33.27. The home club shall be responsible for providing a substantial post-match meal for each member of the Travelling Party, Match Officials and Game Day Operations Staff. A substantial meal is defined as per below:





- For teams that are required to travel via air or bus trip longer than 1 hour, a substantial meal consists of either a sit-down meal or similar containerised for takeaway purposes (e.g. Pasta etc.) plus a drink (water, soft drink etc.) per person.
- For teams that are considered local (e.g. Travel less than 1 hour) a sufficient meal is defined as a substantial sandwich/roll and drink per person.
- The away club is required to discuss directly with the home club if they will be requiring a post-match meal not less than 4 days prior to match day.
- For QRL Game Day Operations Staff (3), the home club is to provide the QRL Ground Manager with three (3) vouchers for use in your canteen.

- 33.28. For Match officials, the home clubs is to provide vouchers (to be left in referees room) for use in your canteen for their post-match meal.
- 33.29. In accordance with the Travel Schedule ([Appendix 2](#)), the QRL is responsible for the cost of meals for each member of the Travelling Party.
- 33.30. Where required, an allowance for lunch for the Travelling Party of \$25.00 per person will be provided.
- 33.31. Where required, an allowance for dinner for the Travelling Party of \$35.00 per person will be provided.
- 33.32. In accordance with section [33.26](#), an allowance for breakfast for the Travelling Party of \$20.00 per person will be provided.
- 33.33. Where an allowance is incurred, the club shall be required to provide the Statewide Competitions department with a tax invoice (**with receipts attached**) for the provision of the allocated allowances within fourteen (14) days of incurring the expense.

## 34. TRIALS

- 34.1. All requests for trial matches involving Statewide Competition clubs shall be lodged via Smartabase with the QRL Statewide Competitions department no less than fourteen (14) days prior to matches being scheduled.
- 34.2. For preseason and post season trials, other than intra club trials which may be approved upon application to the Competitions Manager, clubs shall refrain from playing games from the 3<sup>rd</sup> weekend of October to the 2<sup>nd</sup> weekend in January, inclusive.
- 34.3. Trials being played between the 2<sup>nd</sup> weekend in January and the end of February that kick off prior to 4pm are also subject to the following conditions:
- Games are to be no longer than 60 minutes played in 15-minute quarters.
  - 3 x Sports Trainers can be utilised to run water.
  - Half time can be extended if deemed necessary.
  - No player to play more than 60 minutes.
- 34.4. All trial matches shall require the completion and subsequent lodgement of a Match Report. This shall be in written format utilising standard QRL Match Report sheets or via the relevant submission platform as determined from time to time by the QRL.
- 34.5. All trials for all Statewide Competitions must be videoed for assessment and judiciary purposes and the responsibility for organisation rests with QRL however the cost rests with the host club. These videos must be uploaded to HUDL within 24 hours of match completion.
- 34.6. All trials for all Statewide Competitions must have a doctor in attendance and the responsibility for organisation rests with QRL and cost rests with the host club.
- 34.7. Should clubs require referees for trials, payment will be \$1 per minute and responsibility for the cost rests with the host club.
- 34.8. Players must complete and submit a QRL Train & Trial Agreement Form to the email [contracts@qrl.com.au](mailto:contracts@qrl.com.au) if they are not currently registered with the club they are trialling for (in the current season).

## 35. VIDEOGRAPHY

- 35.1. The QRL has an exclusive agreement with a nominated QRL supplier (Redcorner) for the videography of competition matches.



- 35.2. The nominated QRL supplier will record all competition matches and shall upload to the relevant cloud storage platform within 1 hour of match completion. Vision of all matches will be provided to all teams and Match Officials via Hudl.
- 35.3. The QRL will be responsible for the payment of the services provided by the nominated QRL supplier for all competition matches.
- 35.4. The cost to video trial matches shall be the responsibility of the Host Club and is mandatory for assessment and Judiciary purposes.
- 35.5. The Host Club must provide a suitable powered and elevated platform as close to the half way line as possible.
- 35.6. The QRL shall maintain exclusive rights to the intellectual property captured by nominated QRL supplier and shall be entitled to use such property in any manner it deems appropriate for the promotion and enhancement of the competition.

## 36. WARM UP AREA

- 36.1. The home team must ensure a safe, secure and suitable area is provided for warm up.
- 36.2. Both teams must return to the dressing room at least five (5) minutes prior to the scheduled kick off time.
- 36.3. Where a warm up area is not available and teams are required to use the playing field, allow thirty (30) minutes from the end of the preceding match.

## 37. WELLBEING AND EDUCATION

- 37.1. All players in all Statewide Competitions must complete and attend the relevant social welfare education seminars as directed by the QRL from time to time. Attendance and completion of any online Wellbeing and Education courses must be completed prior to the commencement of the competitions.
- 37.2. The completion of the relevant Junior (U16 – U19) and Senior (HPC, BMD & HDC) modules is mandatory for all players and staff prior to round 1. **Players will not be considered for selection until these modules are completed and visible in their profile on MySideline.**
- 37.3. The relevant modules can be accessed by clicking on the links below.
- **JUNIOR (U16 – U19 players and staff)** – [2023 JUNIOR Player Compliance Quiz](#)
  - **SENIOR (U21 – OPENS players and staff)** – [2023 SENIOR Player Compliance Quiz](#)
- 37.4. The set of instructions has been provided to your clubs wellbeing and education manager. Once a player or staff member successfully completes the online module it will automatically appear I their “My Accreditations” and will remain there permanently.



## APPENDIX 1 - CATCHMENT AREAS

The following catchment areas will act as a boundary for clubs for the registration of players for the competitions and the determination of Development Fees.

A club may contract a player from outside of their area to compete with their club in the competitions. If the player is eligible for the application of a Development Fee (aged 21 and under and on a Development List) it shall be paid under the terms of the Development Fee policy ([Appendix 3](#)).

If a club chooses to maintain a relationship with a club outside of its catchment area it shall be entitled to do so, subject to QRL approval, however it shall remain bound by these areas for the purpose of player registration and any subsequent Development Fees.

<b>Brisbane Tigers</b>	Brothers St Brendan's
	Carina
	East's Juniors
	East's Mt Gravatt
	East's Springwood
	Flagstone
	North/Central Burnett Clubs – shared with Wide Bay Bulls
	Rosedale
	Yarrabilba
<b>Burleigh Bears</b>	Gold Coast Rugby League Clubs (except Tweed– shared with Tweed Seagulls)
<b>CQ Capras</b>	Bundaberg Rugby League Clubs - shared with Wide Bay Bulls
	Central Highlands Clubs
	Central West Clubs
	Gladstone Rugby League Clubs
	Rockhampton Rugby League Clubs
<b>Ipswich Jets</b>	Ipswich Rugby League Clubs
<b>Mackay Cutters</b>	Mackay District Rugby League Clubs
<b>Northern Pride</b>	Cairns District Rugby League Clubs
	Cape & Torres Strait Clubs
	Eacham Junior Rugby League Clubs
	FNQ Rugby League Clubs
	Innisfail Junior Rugby League Clubs
<b>Norths Devils</b>	Aspley Devils
	Banyo Devils
	Brothers Juniors
	Norths Juniors
	Norths St Josephs
	Pine Central Holy Spirit
	Samford Stags
	Valleys Diehards
	West's Arana Hills
	West's JRLFC
	West's Mitchelton
	West's Panthers
<b>PNG Hunters</b>	PNG Rugby League Clubs
<b>Redcliffe Dolphins</b>	Albany Creek Crushers
	Brighton
	Burpengary
	Dayboro



	Deception Bay
	Narangba
	North Lakes
	Pine River Bears
	Redcliffe
<b>Souths Logan Magpies</b>	Browns Plains
	Centenary
	Forest Lake
	Graceville
	Greenbank
	Logan Brothers
	Mustangs
	Normanby
	Souths Acacia Juniors
	Souths Sunnybank
	Waterford
	West's Inala
<b>Sunshine Coast Falcons</b>	Sunshine Coast / Gympie Rugby League Clubs
	South Burnett Clubs – shared with Western Clydesdales and Wide Bay Bulls
<b>Townsville Blackhawks</b>	Gulf Clubs
	Mid-West Rugby League Clubs
	Mt Isa Rugby League Clubs
	Townsville Rugby League Clubs
<b>Tweed Seagulls</b>	Gold Coast Rugby League Clubs – except Burleigh
	Northern NSW to Lismore
<b>Western Clydesdales</b>	Toowoomba Rugby League Clubs
	Border Rugby League Clubs
	Roma & District Rugby League Clubs
	South West Rugby League Clubs
<b>Wide Bay Bulls</b>	Bundaberg Rugby League Clubs – shared with Capras
	North / Central / South Burnett Clubs – shared with SC Falcons and Brisbane Tigers
	Fraser Coast Clubs
<b>Wynnum Manly Seagulls</b>	Beenleigh
	Capalaba
	Eagleby
	Edens Landing
	North Stradbroke Island Sharks
	Redlands
	Russell Island
	Slacks Creek
	Wynnum Manly



## APPENDIX 2 - TRAVEL SCHEDULE

### HOSTPLUS CUP AND BMD PREMIERSHIP

The following shall be provided for each member of the Travelling Party.

Host Region	Visiting Region	Transport	Accommodation	Meals
Cairns	Townsville	Bus	1 night	3
	Mackay / Rockhampton	Air / Bus	1 night unless Charter	3 unless Charter, then as required
	South East QLD* / Gold Coast & Tweed*	Air / Bus	1 night	3
Townsville	Cairns / Mackay	Bus	1 night	3
	Rockhampton	Air / Bus	1 night unless Charter	3 unless Charter, then as required
	South East QLD*	Air / Bus	1 night	3
Mackay	Cairns	Air / Bus	1 night unless Charter	3 unless Charter, then as required
	Townsville / Rockhampton	Bus	1 night	3
	South East QLD*	Air / Bus	1 night	3
Rockhampton	Cairns / Townsville	Air / Bus	1 night unless Charter	3 unless Charter, then as required
	Mackay	Bus	1 night	3
	South East QLD*	Air / Bus	1 night	3
South East QLD	Cairns / Townsville / Mackay / Rockhampton	Air / Bus	1 night	3
	Brisbane* / Ipswich	Nil	Nil	Nil
	Burleigh / Tweed / Sunshine Coast / Toowoomba	Bus	Nil	Nil
Burleigh & Tweed	Brisbane* / Sunshine Coast / Ipswich / Toowoomba	Bus	Nil	Nil
	Burleigh & Tweed	Nil	Nil	Nil
Sunshine Coast	South East QLD	Bus	Nil	Nil
Toowoomba	South East QLD	Bus	Nil	Nil

\*South East QLD Region – Brisbane Tigers, Redcliffe Dolphins, Wynnum Manly Seagulls, Norths Devils, Souths Logan Magpies, Ipswich Jets, Western Clydesdales.

\*Brisbane – Brisbane Tigers, Redcliffe Dolphins, Wynnum Manly Seagulls, Norths Devils, Souths Logan Magpies.

^Note: Airport Transfers will only be provided for the following clubs to & from Brisbane Airport – Sunshine Coast Falcons, Ipswich Jets, Burleigh Bears, Tweed Seagulls and Western Clydesdales.

^Note: PNG covers travel for all clubs

### HASTINGS DEERING COLTS

The following shall be provided for each member of the Travelling Party.

Host Region	Visiting Region	Transport	Accommodation	Meals
Cairns	Townsville	Bus	Nil	2
	Mackay / Rockhampton	Air / Bus	Nil	1
	South East QLD*	Air / Bus	Nil	1
Townsville	Cairns / Mackay	Bus	Nil	2
	Rockhampton	Air / Bus	Nil	1
	South East QLD*	Air / Bus	Nil	1
Mackay	Cairns	Air / Bus	Nil	1
	Townsville / Rockhampton	Bus	Nil	2
	South East QLD*	Air / Bus	Nil	1



Rockhampton	Cairns / Townsville	Air / Bus	Nil	1
	Mackay	Bus	Nil	2
	South East QLD*	Air / Bus	Nil	1
South East QLD	Cairns / Townsville / Mackay / Rockhampton	Air / Bus	Nil	1
	Burleigh / Tweed / Sunshine Coast / Toowoomba	Bus	Nil	Nil
	Brisbane* / Ipswich	Nil	Nil	Nil
Burleigh / Tweed	South East QLD	Bus	Nil	Nil
	Sunshine Coast / Toowoomba	Bus	Nil	Nil
	Burleigh / Tweed	Nil	Nil	Nil
Sunshine Coast	All teams	Bus	Nil	Nil
Toowoomba	All teams	Air / Bus	Nil	Nil

\*South East QLD Region – Brisbane Tigers, Redcliffe Dolphins, Wynnum Manly Seagulls, Norths Devils, Souths Logan Magpies, Ipswich Jets, Burleigh Bears, Tweed Seagulls, Western Clydesdales.

\*Brisbane – Brisbane Tigers, Redcliffe Dolphins, Wynnum Manly Seagulls, Norths Devils, Souths Logan Magpies.

^Note: Airport Transfers will only be provided for the following clubs to & from Brisbane Airport – Sunshine Coast Falcons, Ipswich Jets, Western Clydesdales, Burleigh Bears and Tweed Seagulls.

### HARVEY NORMAN U19S, AUSWIDE BANK MAL MENINGA CUP AND CYRIL CONNELL CHALLENGE

The following shall be provided for each member of the Travelling Party.

Host Region	Visiting Region	Transport	Accommodation	Meals
Cairns	Townsville	Bus	Nil	2
	Mackay / Rockhampton	Air / Charter	1 night	3
Townsville	Cairns / Mackay	Bus	Nil	2
	Rockhampton	Air	1 night	3
Mackay	Cairns	Air / Charter	1 night	3
	Townsville	Bus	Nil	2
	Rockhampton	Bus	Nil	3
Rockhampton	Cairns / Townsville	Air / Charter	1 night	3
	Mackay	Bus	Nil	2
Pool B*	Pool B*	Bus	Nil	1
Burleigh / Tweed	South East QLD*	Bus	Nil	Nil
	Burleigh / Tweed	Nil	Nil	Nil
South East QLD	South East QLD*	Nil	Nil	Nil
	Burleigh / Tweed	Bus	Nil	Nil

\*Pool B – Ipswich Jets, Sunshine Coast Falcons, Western Clydesdales & Wide Bay Bulls.

\*South East QLD – Brisbane Tigers, Souths Logan Magpies, Redcliffe Dolphins, Norths Devils, Wynnum Manly Seagulls.



## APPENDIX 3 - DEVELOPMENT FEES – POLICY OF THE NATIONAL RUGBY LEAGUE

### 1. OBJECTIVES

This Policy and accompanying Schedule of Fees have the following objectives:

- a) Fair compensation for the development investment of a Player and to encourage the continuance of that investment.
- b) Discourage recruitment Clubs from 'cherry-picking' and the development Clubs from 'stockpiling' while still providing Players with an opportunity to develop and progress their rugby league career;
- c) Consider the needs of NRL Clubs who have suffered due to changing demographics and need to recruit more vigorously.
- d) Ensure the Schedule of Fees reflects the special needs of the NZRL ('player drain').
- e) Place wellbeing and playing opportunity at the forefront of decisions, in relation to the movement of Players across organisations.

### 2. DEFINITIONS

The following definitions apply to this Policy (including any appendix to this Policy):

**"Affiliated States"** – means the States and Territories of Australia that do not currently have an NRL Club based within their territorial limits plus Victoria;

**"Age Limit of Fees"** – Development fees do not apply to players who have exceeded the age required to be eligible to participate in the highest level of age-restricted representative competition offered within the State League (or NZRL) where they are registered.

The age limit of fees is equal to the level of the highest age-restricted competition within each State League (or NZRL).

For clarity, the age limit of fees for each League is outlined in Schedule 3. Once a player has exceeded the age eligibility in the League where they are registered, a development fee will not be applicable.

**"Geographical Border"** – means the boundaries that separate the recognized locations of the State and Territory Leagues of Australia and the NZRL and NRL.

**"Club"** – means a Club who fields a team in the junior representative competitions at U16/17 or U18/19 in the NSWRL, QRL, or NZRL and a Club who fields a team in the NSWRL or QRL State Under 21s competition or the State Rugby League competition.

**"Cross Border"** – means the movement of a player from a club in one recognised State League border or NZRL, to a club playing within another State League Border, NRL Club or NZRL.

**"Development Area"** – means an area which has been allocated to a Club who is a participant in the competitions under the auspices of the NRL or a Governing League.

**"Development Fees"** – means a fee(s) payable under this Policy by an SRL Club or NRL Club for the development of a player as outlined in the Schedule of Fees in Schedule 1 to this Agreement.

**"Development Program"** – means a program delivered by an SRL/Region/District that aims to deliver additional coaching and development to selected players as outlined in the Governing Leagues policy and part of their minimum standards.

**"Disputes Adjudicator"** – means a person appointed by a Governing League to resolve development fee disputes.

**"Disputes Panel"** – means a panel of 4 people that will convene in the event of a dispute that has arisen due to the signing of a player from one Governing League to another, one Geographical location to another or with an NRL Club. This panel will rule on Category 1 and 2 disputes and be made up of the following:

- a) NRL Head of Football - Participation, Pathways and Game Development (Chairperson);
- b) NRL Salary Cap Auditor;
- c) Representative of the Governing League that player is clearing from; and
- d) Representative of the Governing League that player is clearing to.

**"District"** – means a geographical area defined by a Governing League for the purposes of organising development programs

**"Governing League"** – means, with respect to a player, the League that is responsible for the administration of the competition in relation to which the player's junior rugby league club was or is a participant;

**"JRA"** – means Junior Representative Agreement in the standard format attached for Junior Players contracting to a Junior Representative Team.

**"Junior Player"** – means a player who has not attained the age of 18 years before 1 January of each year;

**"Junior Representative Team/Club"** – means a Team or Club playing in the Harold Matthews Cup, SG Ball Cup, Cyril Connell Challenge, Mal Meninga Cup, Andrew Johns Cup, Laurie Daley Cup, NZRL U18s and NZRL U16s and representing a League;

**"Leagues"** – the NZRL, the QRL, the NSWRL, the NRL Victoria, the NRL WA, the NRL NT and the NRL SA.

**"MySideline"** – means the online system used by the National Rugby League for player registration and player clearance purposes.

**"NRL"** – means the National Rugby League, being the administrative body responsible for the NRL Premiership competition.

**"NRL Club"** – means one of the 16 clubs competing in the NRL Premiership competition;

**"NRL Development List"** – has the meaning given to that expression by the NRL PCR Rules.



**“NRL Development List Contract”** – means a contract between a Club on the one hand and a Player on the other hand by which the Player agrees to be a Development List Player and plays Rugby League for the Club in the NRL Competition, and/or the Related Competitions.

**“NRL Top 30 List”** – has the meaning given to that expression by the NRL PCR Rules.

**“NRL Top 30 Playing Contract”** – means a contract between a Club on the one hand and a Player on the other hand by which the Player agrees to play Rugby League for the Club in the NRL Competition, and/or the Related Competitions.

**“NRL Premiership”** – means the top-level men’s National rugby league competition organised by NRL and contested by the NRL Clubs and includes the finals series and grand final.

**“NRL Salary Cap Auditor”** – means the person appointed pursuant section 12 on the NRL PCR Rules.

**“NSWRL”** – means the New South Wales Rugby League. **“NZRL”** – means the New Zealand Rugby League. **“Player”** – means a Junior Player or Senior Player.

**“NZRL”** – means the New Zealand Rugby League.

**“Player”** – means a Junior Player or Senior Player.

**“Playing Contract”** – means a playing contract which has been lodged for registration and / or clearance with the Governing League responsible for the State Rugby League competitions or the NRL Competition.

**“Policy”** – means this policy including any schedules or annexures.

**“Protected Player List”** – means the squads notified to the NRL Salary Cap Auditor by 1 October of each season, listing those players who are subject to a development fee as a result of the rules stated in this Policy.

**“QRL”** – means the Queensland Rugby League.

**“Region”** – for the purpose of this policy, has the same meaning as “District”

**“Senior Player”** – means a player who has attained the age of 18 years before 1 January of each year;

**“Schedule of Fees”** – means the Development Fees outlined in the Schedule to this Policy.

**“SRL Club”** – means a Club who participates in the state-based competitions including competitions at U21s and/or the most Senior Open Age competition.

**“State Cup Contract”** - means a contract between an SRL Club on the one hand and a Player on the other hand by which the Player agrees to play Rugby League for the Club in the Hostplus Cup, Canterbury Cup, Hastings Deering Colts or Jersey Flegg Competitions.

**“State Rugby League”** – means any competition run by the NSWRL, QRL, NZRL, or affiliate states.

**“Team”** – means a Team entered into the Junior Representative Competitions or the State Under 21s competition or the State Rugby League competition as representing a League.

**“Truly Developed”** – means players who have been within the District/Junior Representative Club/Region Development Programs (as defined earlier) for a minimum period of two (2) consecutive years.

**“Written Offer”** – means a letter sent to a player, informing them of the Club/Region’s desire to have them as part of their Development Program. This offer can be in the form of a written letter or email that appears on appropriate letterhead, and is signed and dated by the appropriate person representing the Club/Region

### 3. POLICY

#### Calculation of Development Fees

- a) Development Fees will be calculated and paid in accordance with the Schedule of Fees.
- b) Development Fees will be charged at the applicable level outlined in the Schedule of Fees, to the recruiting NRL Club or SRL Club/Team where a Player signs a JRA or a Playing Contract with an NRL Club or SRL Club/Team unless:
  - i) the player has exceeded the Age Limit of Fees;
  - ii) the player has not been ‘truly developed’ by the District/Junior Representative Club/Region claiming the Development Fee;
  - iii) the player is not listed on the relevant Protected Player List; or
  - iv) there has been an agreement reached between the NRL Club or SRL Club/Team signing the player and the Club/Region/District from which the player is transferring, to waive the fee in a particular circumstance. The Governing Leagues of both parties must approve this process.
- c) All Junior Representative Teams/Clubs, NRL Clubs and Leagues will be required to nominate their Protected Player Lists in line with the policies in place for their respective Governing League. Development Fees will be applicable for those Players who are nominated on the Protected Player List. Details relating to the structure of Protected Player Lists for each Governing League can be found in the “Protected Player List Details” in Schedule 2 of this policy.
- d) If a player appears on a Protected Player List and moves to a Club/Team within another Governing League at a level of competition that does not attract a Development Fee and that player subsequently signs a JRA, State Cup Contract, NRL Development List Contract or NRL Top 30 Playing Contract within two years from the date of the original clearance, a Development Fee will be payable to the Governing League that the player relocated from.





- e) For a player to be part of the District/Junior Representative Club/Region Development Program, they must have been given a written invitation to be part of the program. An offer to 'trial' is not considered being part of a Development Program. For clarity, if a player receives a written offer and refuses to attend, a development fee is still applicable.
- f) The final Protected Player List will be circulated to NRL Clubs by the NRL Salary Cap Auditor. The final Protected Player List will be circulated to NSWRL, QRL, NZRL Clubs by the relevant Governing League.
- g) Where a Player registers a contract defined in a particular category, and then subsequently registers a contract in a higher category in the same season of registering the initial contract, an additional fee will be charged by the applicable Governing League who charged the original Development Fee. This additional fee will be the difference between the Development Fee on the initial contract and Development Fee on the subsequent contract.
- h) Once a Development Fee in a particular category is invoiced, no further Development Fee will be applicable for that Player in that particular category if he remains at the same club/district/region or their associated affiliates.
- i) A Development Fee is not payable when a player signs a contract defined in Category 2 of the Schedule, having previously signed a contract defined in Category 3 or 4.
- j) Furthermore, where a Player signs an:
  - i) NRL Development List Contract and has previously been signed to an NRL Development List Contract; or
  - ii) NRL Top 30 Playing Contract and has previously been signed to an NRL Top 30 Playing Contract then no Development Fee will apply unless the incumbent club has offered the player a contract at or above the current contract value.

#### 4. REGISTRATION OF CONTRACTS

- a) A Club or Teams who sign a Player to a JRA or Playing Contract must register the agreement with the Governing League or the NRL within 5 business days of the player signing the JRA or Playing Contract.
- b) It is the Clubs/Leagues responsibility to check whether a player is on a Protected Player List prior to signing and/or registering a JRA or Playing Contract.
- c) The Governing League of a Club/Team that signs a player to a JRA or Playing Contract that requires an international clearance from New Zealand, will advise NZRL as part of the international clearance process that the player has had a JRA or Playing Contract registered with the Governing League.

#### 5. NOTIFICATION OF DEVELOPMENT FEES

- a) Clubs or Teams who sign a JRA or SRL Playing Contract with a Player with a Development Fee applicable will be notified by the Governing League who registers the agreement that a Development Fee is applicable within 10 business days of the Club/Team lodging the JRA or SRL Playing Contract for registration.
- b) NRL Clubs who sign a player to an NRL Top 30 or NRL Development List contract with a Development Fee applicable should be invoiced within 10 working days of the release of the NRL Top 30 List and NRL Development List on 1 November, 1 March and 30 June each season.
- c) The Governing Leagues are required to advise the NRL weekly of any newly contracted Players at each level and the NRL will advise all Leagues of any newly contracted Players in the NRL Top 30 List and NRL Development List.
- d) Notifications will be made by the Governing Leagues to NRL via MySideline and notifications from NRL to Governing Leagues via the clearance application process on MySideline.

#### 6. PAYMENT OF DEVELOPMENT FEES

- a) The invoice shall be raised by the applicable Governing League, SRL Club or NRL Club. The Governing League, SRL Club or NRL Club is required to document the break-up of the payment with respect to the various recipients and their portion of the payment. This is to allow Governing Leagues and Clubs to provide development acknowledgement if so desired.
- b) Arrangements made by NRL Clubs, SRL Clubs and their local Leagues associated with the Club (Development Area) to waive Development Fees for the use of Players during the course of a season is a matter for negotiation between the NRL Club/SRL Club and the local League with the approval of the relevant Governing League in the State/NZRL.
- c) Development Fees should be paid in full prior to a clearance being provided, however, if a clearance is provided irrespective of payment, the Player is clear to play. The NRL Disputes Adjudicator and/or the Disputes Panel may intervene to ensure payment is received by the appropriate Club/Team.
- d) Retrospective fee disputes greater than 12 months old will not be dealt with under the provisions of this Policy and will be deemed null and void unless the necessary documentation and supporting information was lodged with the Disputes Adjudicator by 5pm on 31 October in the season of which the dispute relates (i.e. the last day of the contracting year).

#### 7. DISPUTES RESOLUTION – CATEGORY 1 & 2

- a) Any disputes as to the liability to pay a Development Fee or the quantum of a Development Fee for a Player moving within a Geographical Border must be promptly referred to the Disputes Adjudicator within that Governing League, or their nominee, for determination in their absolute discretion.
- b) If a Player is registered in one of the Governing Leagues and signs a contract with another Governing League or in another geographical location, and there is any dispute, the matter will be referred to the Disputes Panel.
- c) If a majority decision cannot be reached by the members of the Disputes Panel, the casting vote will be afforded to the Chairperson.
- d) If the NRL Head of Football - Participation, Pathways and Game Development or the NRL Salary Cap Auditor is unavailable to sit on the Disputes Panel for any reason, they may appoint a proxy.
- e) The Disputes Adjudicator (or their nominee) or the Disputes Panel, whichever is relevant to the Development Fee, may determine that some or all or none of the Development Fee is payable. That determination will be final and binding.
- f) Where a Development Fee is determined by the Disputes Adjudicator (or their nominee) or the Disputes Panel, whichever is relevant to the Development Fee, to be payable by a Club/Team, the amount of that Development Fee shall be remitted as directed by the Disputes Adjudicator



(or his nominee) or Disputes Panel, whichever is relevant to the Development Fee, within 14 days of the date of the determination. However, should a Club/Team fail to remit a Development Fee – or any part of a Development Fee – within that time period, the Development Fee may be deducted from the annual grant payable by the Governing League to the Club/Team and remitted by the Disputes Adjudicator or Dispute Panel, whichever is relevant to the Development Fee, on behalf of the Club/Team.

## 8. DISPUTES RESOLUTION – CATEGORY 3 & 4

- Any disputes as to the liability to pay a Development Fee or the quantum of a Development Fee for a player registered in the NRL Premiership (Category 3 and 4) must be promptly referred to the NRL Salary Cap Auditor, or their nominee, for determination in his absolute discretion.
- The NRL Salary Cap Auditor, or their nominee, may determine that some or all or none of the Development Fee is payable. That determination will be final and binding.
- Where a Development Fee is determined by the NRL Salary Cap Auditor, or their nominee, to be payable by an NRL Club, the amount of that fee shall be remitted as directed by the NRL Salary Cap Auditor, or his nominee within 10 days of the date of the determination. However, should an NRL Club fail to remit a Development Fee – or any part of a Development Fee – within that time period, the Development Fee shall be deducted from the annual grant payable by the NRL to the NRL Club and remitted by the NRL Salary Cap Auditor, on behalf of the NRL Club.

## 9. SCHEDULES

### 9.1 Schedule 1 – Schedule of Fees (Development Fees).

Category	Development Fee	Amount
One (1)	Development Fee on JRA	\$5,000
Two (2)	Development Fee on State Cup Contract–Regional, Interstate and International Transfers Only	\$7,500
Three (3)	Development Fee on NRL Development List Contract	\$12,500
Four (4)	Development Fee on NRL Top 30 Playing Contract	\$25,000

### 9.2 Schedule 2 – Protected Player List Details

NSWRL	Competition	Teams	List Number	Total
U15	Harold Matthews/Andrew Johns Clubs	25	30 or 20% of District/Region, whichever is higher <sup>1</sup>	750+
U16	Harold Matthews/Andrew Johns	25	30	750
U17	SG Ball/Laurie Daley Clubs	25	30	750
U18/19	SG Ball/Laurie Daley	25	30	750
U20/21	Jersey Flegg	12	30	360

<sup>1</sup> Based off NSWRL Minimum Standards and policies

QRL	Competition	Teams	List Number	Total
U15	SRL Club Aligned Academy	14	30	420
U16	SRL Club Aligned Academy	14	30	420
U17	SRL Club Aligned Academy	14	30	420
U18	Mal Meninga Cup clubs	14	30	420
U19/U20/U21	Hastings Deering Colts clubs	14	30	420

NZRL	Competition	Teams	List Number	Total
U15	National Youth Tournament	8	30	240
U16	NZRL Zones	8	30	240
U17	National Youth Tournament	8	30	240
U18	NZRL Zones + Warriors SG Ball team	n/a	240	240
U19/20	NZ U19's and Senior Comps	n/a	240	240

NRL VIC	Competition	Teams	List Number	Total
U15	Rep Squad or Academy	1	30	30
U16	Rep Squad or Academy	1	30	30
U17	Rep Squad or Academy	1	30	30
U18/U19	SG Ball	1	30	30
U20/21	Jersey Flegg	1	30	30



NRL WA	Competition	Teams	List Number	Total
U15	Rep Squad or Academy	1	30	30
U16	Rep Squad or Academy	1	30	30
U17	Rep Squad or Academy	1	30	30
U18	SG Ball	1	30	30

NRL NT	Competition	Teams	List Number	Total
U15	Rep Squad or Academy	1	30	30
U16	Rep Squad or Academy	1	30	30
U17	Rep Squad or Academy	1	30	30
U18	Rep Squad or Academy	1	30	30

NRL SA	Competition	Teams	List Number	Total
U15	Rep Squad or Academy	1	30	30
U16	Rep Squad or Academy	1	30	30
U17	Rep Squad or Academy	1	30	30
U18	Rep Squad or Academy	1	30	30

### 9.3 Schedule 3 – Age Limit of Fees

Competition	
QRL	the calendar year where the player turns 21 years of age
NSWRL	the calendar year where the player turns 21 years of age
NRL WA	the calendar year where the player turns 18 years of age
NRL SA	the calendar year where the player turns 18 years of age
NRL NT	the calendar year where the player turns 18 years of age
NRL Victoria	the calendar year where the player turns 18 years of age
NZRL	the calendar year where the player turns 18 years of age

## 10. APPENDIX

### 5.1 Example of Clause 3.1.b.i

If a player signs a NSW State League Contract for a club for the year he turns 22 after playing more than 2 years with another NSW State League Club then no development fee is applicable

### 5.2 Example of Clause 3.1.g

A player signs a State League contract at a new Club for 2021 and a development fee of \$7500 is paid by the recruiting club. If that player is then upgraded to an NRL Development List Contract for 2021, an additional \$5000 would need to be paid to the club the player was recruited from.

### 5.3 Example of Clause 3.1.h

A player signs a QLD or NSW State League Contract and plays 2 years with a club. Before his 22nd year, he then signs another State League Contract with a different club. If his current club has made an offer to the player on terms no worse than their previous contract, then a development fee would be applicable.

### 5.4 Example of Clause 3.1.i

If a player is on an NRL Development List contract (Cat 3) and then signs a State League Contract (Cat 2), then no Development Fee is payable.



# APPENDIX 4 - SALARY CAP / CONTRACTING MODEL

## PART 1 - INTRODUCTION

### 1. Purpose of Document

The purpose of this document is to provide clubs with guidelines to allow management of the QRL Open Age (Hostplus Cup) and Under 21's (Hastings Deering Colts) Salary Cap.

### 2. Commencement

The provisions of these rules commence in operation from midnight on 31 October 2022. This coincides with the commencement of the QRL 2023 financial year.

## PART 2 – THE SALARY CAP

### 3. Salary Cap Values

The salary cap for each club is as follows:

- The club salary cap is \$425,000 for the **2023 playing season onward**.
- The salary cap is estimated at the beginning of the season based on contracts received and using the formulas detailed in section 8.
- The salary cap estimation is based on the highest paid 17 player plus all guaranteed player payments outside the Top 17 including but not limited to the following:
  - Player & Training Fees
  - Relocation allowance
  - Travel allowance
  - Meal allowance
  - Accommodation
  - Any additional player benefits/payment
- The salary cap actuals at the end of the season will be used to determine the final figure.**
- The actual figure calculated at year end includes all payments in all competitions – Hostplus Cup, Hastings Deering Colts & Auswide Bank Mal Meninga Cup.

### 4. Minimum Salary Cap Value

Clubs are not expected to meet a minimum salary cap value.

### 5. Maximum Wages

- Maximum Wage for an Hostplus Cup player is \$32,000.
- Maximum Wage for a Hastings Deering Colts u21s player is \$5,000.

### 6. Salary Cap Administration

- A club is bound by the team and individual salary cap values.
- If a club's team salary cap value breaches the salary cap of \$425,000, the Club will face the following sanctions:

Breach Level	Monetary Sanction	Competition Points Sanction
\$425,001 - \$435,000	\$1 for \$1 fine over \$425,000 and up to \$435,000	No loss of competition points
\$435,001 - \$440,000	\$1 for \$1 fine for total amount over \$425,000	Loss of 6 competition points in current season
\$440,001 <	\$1 for \$1 over \$425,000	Loss of 6 competition points in current season, plus an additional 2 competition points for every \$5,000 (or part thereof) over \$440,000

- If a club's individual player salary cap value breaches \$32,000, the Club will face the following sanctions:

Breach Level	Sanction	Points Sanction
\$32,001 and above for Hostplus Cup	Player ineligible for selection once income exceeds \$32,000	If club plays a player who is over the individual cap, loss of 4 competition points per breach in current season
\$5,001 and above for Hastings Deering Colts	Player ineligible for selection once income exceeds \$5,000	If club plays a player who is over the individual cap, loss of 4 competition points per breach in current season

- Any breaches or conflicts regarding salary cap will be heard by the salary cap committee.
- The salary cap committee will be comprised of the following positions;
  - QRL Statewide Competitions Clubs Director
  - QRL Chief Financial Officer
  - QRL Chief Executive Officer
  - QRL Statewide Competitions Manager
- The salary cap committee will assess and make a determination for any breaches or conflicts and their decision will be final.

### 7. Foreign Currency

- The salary cap value for contracts written in foreign currency will be converted to Australian Dollars (AUD).
- The value will be converted using an average of the daily exchange rates published by the Reserve Bank of Australia for 3 years ending on 31 October of the season preceding the upcoming QRL season.



## PART 3 – SALARY CAP COMPONENTS / REMUNERATION

### 8. Salary Cap Inclusions

- The QRL salary cap is calculated as the value of all benefits provided to players (Hostplus Cup & Hastings Deering Colts ONLY), unless specifically listed under “exclusions”- point 9
- All benefits must be assigned a dollar value in a player’s QRL playing contract – if not, nominal values will be acquitted against the item.
- All remuneration stated in a player’s QRL playing contract must be stated inclusive of PAYG and superannuation.

Remuneration / Benefit Provided	Assessed Value
Playing / Sign On Fee	Total sign on fee – includes any Sign on fee paid to any player regardless of whether they are in the 17 highest paid players at the club and regardless of competition.
Match Fee	For estimate purposes, this is the value based on 20 regular season matches for the 17 highest paid players. For actual purposes, this is the value of all match fees paid to all players for all matches.
Results Fee	For estimate purposes, this is the value based on 20 regular season wins for the 17 highest paid players. For actual purposes, this is the value of all results fees paid to all players for all matches.
Finals payments	Finals match payments and bonuses above amount of regular season match payments and bonuses (e.g if you pay \$800 for regular season matches and \$1,000 for finals matches, \$200 per game will be included in salary cap estimates and final calculations)
Marquee Player Maximum Individual Wage Exemption	One (1) Marquee Player allowance with the following conditions: - One (1) Marquee Player exemption per club (over Individual Cap of \$32,000). - Player nominated on Smartabase and approved by QRL. - Payments included in Salary Cap. - Player must have played 50 NRL matches <u>or</u> a minimum of 1 x Tier 1 or Tier 2 international match.
Education / employment grants & payments	Total education payment/grant as stated in contract.
Housing allowance / Accommodation	Housing allowance as stated in contract. If no value provided, this will be based on \$200 per week x 52 = \$10,400.
Meal Allowance	Payment as stated in contract.
Travel Allowance	Payment as stated in contract.
Relocation Allowance	All costs associated with relocation above \$5,000 included (e.g \$6,000 cover, \$1,000 is included in the salary cap). Valid receipts confirming expenditure to be supplied and uploaded to Smartabase for all relocation expenses.
Medical Insurance	Any value over \$3,000 (e.g \$3,500 cover, \$500 is included in the salary cap).
Other benefits including cars	As stated in contract. (EG: Residents, PNG Nationals Selection etc). Cars provided will be a nominal \$5000 figure.
Bonuses	Unearned bonus's (e.g. number of games played, rep bonus) will be assessed prior to the season based on 20 matches / wins. Actual figures will be re-assessed at seasons end and included in the current year’s salary cap.

### 9. Salary Cap Exclusions

Remuneration / Benefit Provided	Assessed Value
Private Health Insurance	Private health insurance is compulsory for all QRL contracted players (that is all players contracted to play in QRL Statewide Competitions). It is not compulsory for Clubs to pay for medical insurance for players but payment of a private health insurance policy by a club will be excluded from the capped value. Any payment over \$3,000 is included in the salary cap (e.g \$3,500 cover, \$500 is included in the salary cap).
Employment	The amount of employment remuneration paid to the player will be excluded where the player is paid at a commercial “Arms-length” rate of pay commensurate with the duties the player is performing. Clubs must provide employment contract to QRL to ensure transparency. Clubs must state in Schedule 1 of the Standard Player Agreement if the player is to be employed by the club or associated body.
Prizemoney	Any Prize money from QRL Statewide Competitions <b>that is shared with the players.</b>
Grand Final / National Final	Any payments and bonuses are excluded from the Salary Cap if paid from prizemoney.
BMD Premiership players	Any payments and bonuses are excluded from the Salary Cap.
NRL Contracted Players	Includes Top 30 and NRL Development List players. However, any money or benefit paid to or for the player by the Statewide Competitions Club is included in the Salary Cap.

## PART 4 – PLAYER LIST & REGISTRATIONS

### 10. Players included in Salary Cap

- The QRL Salary Cap covers all players registered under a QRL standard player agreement.
- Players who participate in QRL Statewide Competitions and are in the NRL “Top 30” or “NRL Development List” are not included in the salary cap unless they receive any payment from the Statewide Competition club.
- The number of players included under the Salary Cap is limited to the following:
  - Hostplus Cup 34 players
  - Hastings Deering Colts 32 players
  - Auswide Bank Mal Meninga Cup 30 players
- Any player added to the above squads due to injury or other reason.
- Clubs can apply to have a player replaced due to injury or other valid reason by applying for an exemption to the Competitions Manager.

### 11. Other Competitions



- a) From 2020, clubs must only sign the above number of players in each relevant competition.
- b) Only those players nominated by the club can be selected at Hastings Deering Colts U21s or Hostplus Cup level.

## PART 5 – SALARY CAP ASSESSMENT

### 12. Record Keeping Obligations

- a) Each club must submit, maintain and make available for inspection a database of player contracts, contract values & payments in a format provided or approved by the QRL.

### 13. Pre-Season Salary Cap Assessment – Estimated

- a) All values and contracts inputted into Smartabase.
- b) Salary Cap preseason estimate base on highest 17 player payments plus all guaranteed player payments outside Top 17 including but not limited to the following:
  - i. Playing & Training Fees
  - ii. Relocation allowance above \$5000 – receipts for all expenses required
  - iii. Travel Allowance
  - iv. Meal Allowance
  - v. Accommodation
  - vi. Any additional player benefits/payments (eg finals bonuses above regular season match payments)
- c) Preseason estimate based on player playing and winning all regular season matches available.
  - i. 2023 = 20 regular season games played and won
- d) Prior to 1 February of the QRL playing season each club and the QRL shall agree the estimated salary cap contract value.
- e) Where applicable the “marquee player” will be nominated at this time.
- f) All contracts must have been registered prior to this date.
- g) Each club must submit their listing of players and contract values via the current QRL Salary Cap Assessment tool (Smartabase).
- h) Any underaged player payments will be assessed in the competition relevant to their age. If they play a higher grade, their payments will be assessed against that competition.

### 14. Post-Season Salary Cap Assessment - Actuals

- a) Prior to 31 October each year, or as soon as practicable after the end of the QRL playing season, each club and the QRL shall come together to agree the final salary cap contract value based on actual player payments for that year.
- b) After a review is conducted, a final salary cap value will be agreed.
- c) “Spend to Date” dashboard to be incorporated in Smartabase.
- d) Results entered weekly so current Salary Cap expenditure is available to all clubs.

## 2023 CONTRACT SUBMISSION GUIDELINES

QRL Player Agreements will need to be signed via DocuSign by all players competing in the following competitions: Hostplus Cup, BMD Premiership and Hastings Deering Colts. Auswide Bank Mal Meninga Cup players must sign a QRL Player Agreement if they are receiving any benefit/s or are selected in a higher grade. Players under the age of 18 at the time of signing must use the U18 QRL Player Agreement which includes a signature from a parent/guardian.

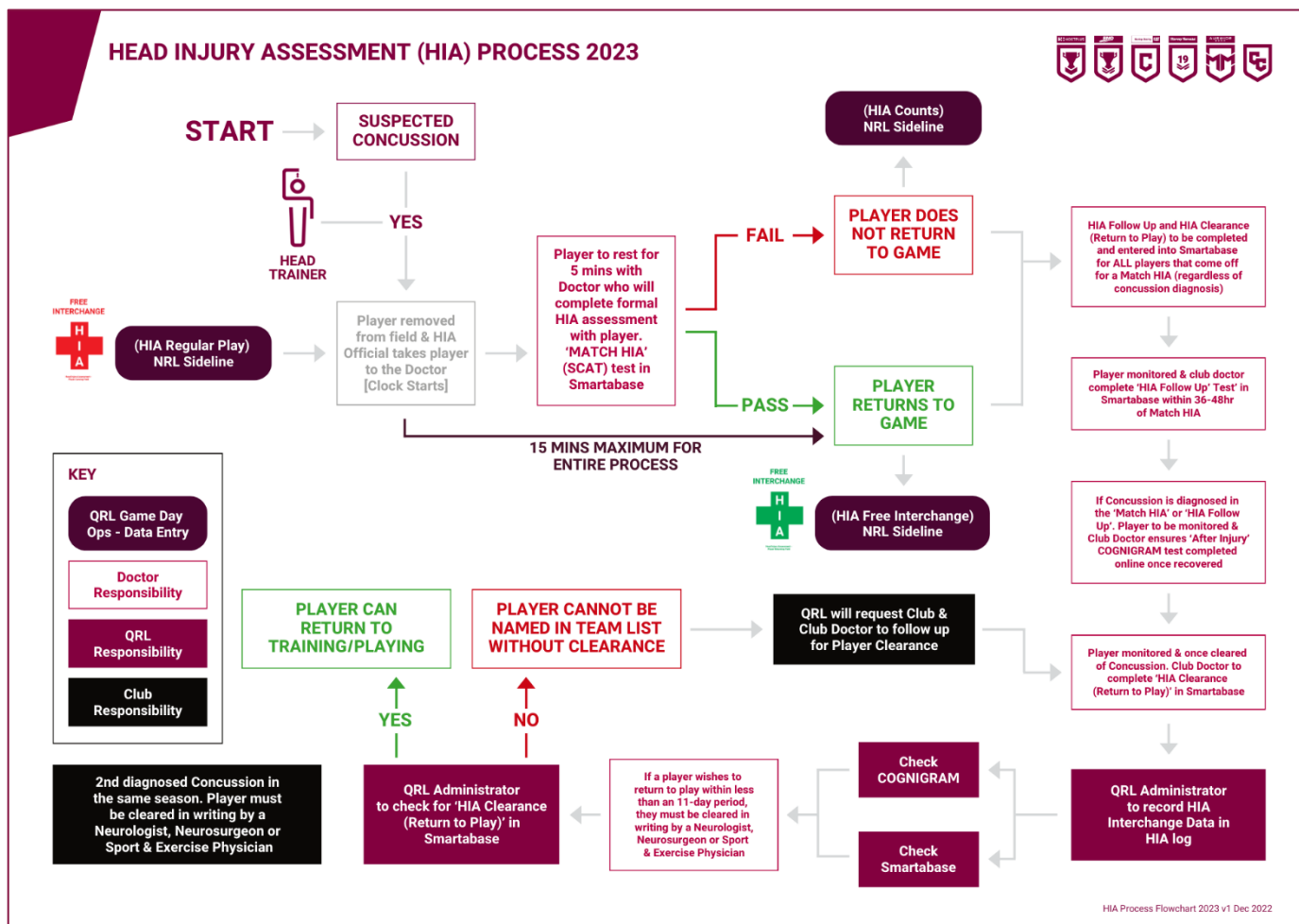
A player’s contract is only successfully lodged and registered when all the following criteria are met:

1. The player is visible and registered as an “Active” participant in your club on MySideline.
2. The player has been added to your squad list in MySideline.

Contract Template Name	Competition	Contract Y/N	Registration Type	Upload to Smartabase
QRL Player Agreement 2023 <b>*Open Age*</b>	Hostplus Cup BMD Premiership Hastings Deering Colts	DocuSign contract (Regardless if player gets paid or not)	Player Tackle	Yes
QRL Player Agreement u18 2023 <b>*Under 18 of age years at date of signing*</b>  <b>*Guardian/ Parental Signature mandatory*</b>	Hostplus Cup BMD Premiership Hastings Deering Colts	DocuSign contract (Regardless if player gets paid or not)	Player Tackle	Yes
NRL Players	Hostplus Cup BMD Premiership Hastings Deering Colts Auswide Bank Mal Meninga Cup	No contract required if Top 30 or Development Player	Permit required	Yes <b>*Still required to submit however no contract needed*</b>



## APPENDIX 5 - CONCUSSION MANAGEMENT POLICY AND PROCEDURE



### BACKGROUND

All Clubs and persons bound by these Rules must comply in all respects with the provisions of the [NRL Community Rugby League Policy and Guidelines for the Management of Concussion](#). As well as the following QRL Policy and Flow Chart, a breach of any of the provisions of the NRL Guidelines and QRL Policies may be enforced by the imposition of a penalty or penalties if a contravention of any of these provisions is found to have occurred.

### QRL CONCUSSION POLICY

The following is to be the protocol of management of Concussion in all Queensland Statewide Competitions.

### CONCUSSION AND RETURN-TO-PLAY DECISIONS

Any player with a suspected concussion should immediately be removed from the field of play by the HIA process and should not be permitted to return to play the same day unless the Doctor attending to the player allows him to continue in the match.

It is recommended that the SCAT 5 tool (Sport Concussion Assessment Tool 5) be used by the Doctor in the clinical assessment of concussion on game day via the relevant QRL provided Concussion management system (Smartabase) HIA process.

Return to play after a concussion should only take place after a thorough evaluation process by the Club Doctor via the relevant QRL provided Concussion management systems (Cognigram & Smartabase) HIA Follow-Up process. This should confirm that the player is free of all signs and symptoms of a concussion.

The diagnosis of concussion remains a clinical decision based on a number of factors including symptoms, signs, cognitive impairment and behavioural changes.

If a player is diagnosed as having a concussion, the player must not be allowed to return to play or training on that day until cleared by the Club doctor via the relevant QRL provided Concussion management system (Smartabase) Return to Play Sign Off process.

### STEP 1 – BASELINE COGNITIVE TESTING

- For each Player, establish a preseason baseline for normal psychometric state via the use of Cognigram. Each club is to appoint administrator/s to conduct the testing and notify the QRL of these administrators. On the rare occasion, that a baseline cannot be achieved, either obtain formal neuropsychometric testing or accept the "invalid" test as that Player's baseline. Cognigram testing should be done annually on all players registered with the club and any Player who had an invalid baseline.





2. Each Player must also undertake a Smartabase cognitive baseline test in order for game day SCAT5 comparison tests to be performed.

Conduct preseason education of players, coaching and training staff to emphasise that concussion is not a trivial injury and repeat concussions can lead to long-term consequences which can be prevented if concussion is managed appropriately.

## STEP 2 – ON-FIELD ASSESSMENT – SPORTS TRAINERS

Identifying a concussion as early as possible is paramount and Trainers should be competent in this very important aspect of their duties. The assessment by the Trainer should include the use of Maddocks Score modified questions.

### Maddocks Score:

“I am going to ask you a few questions, please listen carefully and give me your best answer;

- What ground are we at today?
- Which half is it now?
- Who scored last in this game?
- What team did you play last week?
- Did your team win the last game?

Incorrect response indicates that the player should be removed from the field.

In addition, the player should be immediately removed from the field of play if any of the following signs are present after a direct or indirect blow to the head:

- a) loss of consciousness (LOC)
- b) player lying motionless on the ground or slow to get up
- c) player exhibits balance or motor coordination problems (player stumbles, has slow / laboured movements or unsteady gate)
- d) player is disoriented or confused (inability to respond appropriately to questions; not aware of plays or scores)
- e) player exhibits a loss of memory
- f) player has dazed, blank or vacant look on face
- g) player has visible facial injury in combination with any of the other signs.

### WHEN IN DOUBT THE DOCTOR IS IN CHARGE.

**Note:** If the Player is unconscious or has neck pain, the player should be immobilised and treated as a spinal injury.

Smelling salts (ammonium carbonate) or similar substances must never be used following a head injury.

## STEP 3 – HEAD INJURY ASSESSMENT (HIA) BY THE GAME DAY DOCTOR

- i) The Player should be allowed to rest for 5 minutes. This is included in the total 15-minute HIA period.
- ii) The Medical Officer ascertains any concussive symptoms, performs a cervical and neurological examination and performs an online SCAT 5 via Smartabase.
- iii) The Game Day Doctor may add an exercise challenge.
- iv) If the clinical diagnosis of concussion is made the Player will not return the field of play on the same day.
- v) Please note: HIA's are to be conducted over a **mandatory** 15-minute period.

While the Player is being assessed for a concussion the team will have a free interchange.

If the Player is deemed to not have a concussion, the player may be allowed to return to the field of play but must be regularly re-evaluated by the Head Sports Trainer throughout the remainder of the game.

## STEP 4 – POST CONCUSSION ASSESSMENT TO BE CONDUCTED BY THE CLUB DOCTOR

- a) **Post-Match:**
  - i) Medical review regarding ongoing symptoms;
  - ii) Assign the Player to the care of a responsible adult i.e. family member, sports trainer or club official and it should be noted that the injured player should not be alone for at least the next 24hrs. If the situation arises the medical officer may need to determine if or when the player can take a scheduled flight home;
  - iii) Give the caregiver a head injury sheet (e.g. SCAT, UPMS) and advise them to monitor the Player particularly over the next four hours;
  - iv) Advise the carer of the warning signs and symptoms of deterioration;
  - v) Advise the Player to avoid alcohol and non-steroidal anti-inflammatory medication the day after injury;





vi) Following a concussive episode, the Player should not be allowed to drive that day.

**b) The next day and the following week:**

- vii) Evaluation is conducted by the club doctor within 36-48 hours (via QRL provided concussion management system – Smartabase, HIA follow up). Analysis is performed to enquire about ongoing symptoms.
- viii) All players with a diagnosed concussion during Match HIA or Follow Up HIA must complete an online Cognigram After Injury Cognitive test (directed by Club Doctor) to an acceptable level before returning to training and playing.
- ix) The evaluation to return to play may include a post injury cognitive test as well as other neurological and physical tests.
- x) If Cognigram cognitive tests have not returned to normal within 10 days of the incident consideration must be given to referring the patient to specialist services.
- xi) In the recovery period, it is important to emphasise to the player that the player requires physical and cognitive rest.
- xii) It should be noted that return to sport is only after the 'Return to Play Sign Off' medical clearance (via QRL provided concussion management system – Smartabase) by the Club Doctor after thorough assessment including SCAT and not limited by a further Cognigram test returning to baseline.
- xiii) The above 'Return to Play Sign Off' medical clearance must be completed before the player can return to training and/or playing.
- xiv) Only the Club Doctor can clear a player to return to training and play after a concussion. If other medical opinions and clearances are sought the club doctor must give the final clearance.
- xv) Numerous failed HIA's may result in the QRL Chief Medical Officer requesting further analysis

**c) Players wishing to return to play following concussion**

- i) Players wishing to return to play prior to 11 days post-concussive episode are required to gain clearance from a Neurologist, Neurosurgeon or Sports Physician.
- ii) Players who suffer two (2) concussive episodes in the same season must also gain clearance from a Neurologist, Neurosurgeon or Sports Physician regardless of time out of the game.



## APPENDIX 6 - 2023 BMD PREMIERSHIP PLAYER POINTS INDEX SYSTEM (PPIS)

Cat	Criteria	Points
<b>A</b>	➤ A player who has represented the Australian Jillaroos, NZ Kiwi Ferns or England within the last 4 seasons for 2023 (2022, 2021, 2020 or 2019), 5 seasons for 2024.	<b>20</b>
<b>B</b>	➤ A player who has represented NSW or QLD in an Origin/State Game within the last 4 seasons for 2023 (2022, 2021, 2020 or 2019), 5 seasons for 2024.	<b>15</b>
<b>C</b>	➤ A player registered and played 2 or more NRLW games within the last 2 seasons for 2023 (2022, 2021) ➤ A player registered and played 5 or more NRLW games within the last 4 seasons for 2023 (2022, 2021, 2020 or 2019), 5 seasons for 2024.	<b>10</b>
<b>D</b>	➤ A player that represented Prime Ministers XIII, QLD Country, QLD City, NSW City or NSW Country within the last 4 seasons for 2023 (2022, 2021, 2020 or 2019), 5 seasons for 2024. ➤ A player who has represented NSW or QLD in an underage Origin/State Game within the last 2 seasons for 2023 (2022, 2021), 3 seasons for 2024.	<b>8</b>
<b>E</b>	➤ A player who has represented a tier two nation (a country other than Australia, New Zealand, or England) in approved international games in the past 2 seasons. ➤ A player that has represented at the National Championships in the past 2 seasons. ➤ A player that has played more than 6 BHP/BMD Premiership games in the last 2 seasons. ➤ A player from another clubs Harvey Norman U19s team in 2021 or 2022. ➤ A player that has played HNWP or equivalent inter-state or international competition (ie Tarsha Gale, English Super League, Auckland Women's Opens) with 10 + games experience at that level.	<b>6</b>
<b>F</b>	➤ A BMD Premiership or Harvey Norman U19s player with 6 or less games (in each grade) returning to your club. ➤ A player that has played HNWP or equivalent inter-state or international competition with less than 10 games experience at that level. <b>(See also in Category H below)</b>	<b>3</b>
<b>G</b>	➤ A player who has played any level of Community League (Open Age – above U18) Women's competition	<b>2</b>
<b>H</b>	➤ A player who has not previously played Senior Rugby League (Open Age – above U18). ➤ A Queensland Origin eligible player who returns from any external competition, regardless of prior level achieved.	<b>0</b>

### GUIDELINES

Players will be assessed at their highest possible category & points, not including the current season. QRL will issue a report with all players points for all clubs.

- 1) Upon receiving this report, clubs have a limited period to review the players points.
- 2) Prior to round one, all players points will be confirmed and cannot be altered.
- 3) Any new players will be assessed, and reports will be sent weekly with new players points.
- 4) Points calculated using the players participating in that match only (Max 17)

Maximum Points allowed per team:

- a) 130 points cap - 2022
  - b) 120 points cap - 2023
  - c) 110 points cap - 2024
- 5) New team cap - 10 points on top of the above (year 1 only)
    - a) 130 points cap - 2023
    - b) 110 points cap - 2024
    - c) 110 points cap - 2025

### PLAYER DISCOUNTS

A player discount will be calculated using only ONE of the following discount rules. Consideration for a discount will also be considered and assessed by the Competitions Manager for those players who reside within catchment areas, as per [Appendix 1](#).

DEVELOPMENT DISCOUNT	OR	LOYALTY DISCOUNT
One Category discount ( <i>down only to the maximum points of the immediate category below</i> ) for CAT A, B, C, D & E if the player earns a position in a higher category then returns to the same club from the previous season.		1 point discount for each year a player, plays for the same club or affiliated club ( <i>down only to the maximum points of the immediate category below</i> ). For example, a CAT D player can get 2 points (2 years) of discounts but only down to 6 points ( <i>the maximum for CAT E</i> )
<b>LONG TERM NON-SELECTED REPRESENTATIVE PLAYERS.</b> Players that have achieved CAT A, B or C status and haven't played in that representative group after 3 seasons (2022), 4 seasons (2023) and 5 seasons for (2024) will receive a one category deduction and then are entitled to the loyalty discounts of a further 1point/year drop to a maximum of a two category drop from their highest achievement level.		
<b>PLAYER MENTOR</b> Each club can nominate one (1) player that fits the following criteria, and if approved, that player will be allocated zero (0) points: <ul style="list-style-type: none"> <li>- Player is over 30 years of age (as at 1<sup>st</sup> Jan in the year of competition)</li> <li>- Has played 30+ games inclusive of either BHPP, HNWP, NRLW or equivalent international competitions.</li> <li>- Must hold a minimum IGC or Level 1 Sports Trainers qualification and be assigned to the coaching staff of either the BMD Premiership or Harvey Norman U19s team.</li> </ul>		



## APPENDIX 7 - 2023 QRL STATEWIDE COMPETITIONS RULE CHANGES & ADOPTIONS

Year Introduced	Law Adoptions	International Law Changes (ILC) or NRL Law Changes (NLC) or QRL Law Changes (QLC)	Hostplus Cup	BMD Premiership	Hastings Deering Colts	Harvey Norman u19	Auswide Bank Mal Meninga Cup	Cyril Connell Challenge
2020	20/40 kick	NLC	●	●	●	●	●	●
2020	30/40 kick	NLC	●	●	●	●	●	●
2020	Mutual Infringement Restart	ILC	●	●	●	●	●	●
2020	Mid-Air Tackles	ILC	●	●	●	●	●	●
2021	Lateral Position of Scrums	NLC	●	●	●	●	●	●
2021	Message Runners	NLC	●	●	●	●	●	●
2021	Play the Ball Restart	NLC	●	●	●	●	●	●
2021	Incorrect Play the Ball	NLC	●	●	●	●	●	●
2021	Early Scrum Break	ILC	●	●	●	●	●	●
2021	2 Point Field Goals	ILC	●	●	●	●	●	●
2022	Trainers Stopping Play	NLC	●	●	●	●	●	●
2022	Free Interchange Rule – only granted when offending player is sin binned or sent off	NLC	●	●	●	●	●	●
2022/23	Penalty – ruck & 10 metre infringements <b>inside 40m only</b>	NLC	●	●	●	●	●	●
2022/23	Penalty – ruck & 10 metre infringements <b>full field</b>	NLC	●	●	●	●	●	●
2022/23	Six Again – ruck & 10 metre infringements <b>outside 40m only</b>	NLC	●	●	●	●	●	●





**QUEENSLAND RUGBY FOOTBALL LEAGUE LIMITED**

ABN 65 009 878 013

83 CASTLEMAINE STREET, MILTON QLD 4064

LOCKED BAG 3000, PADDINGTON QLD 4064

T +61 7 3367 6000

E [rugbyleague@qrl.com.au](mailto:rugbyleague@qrl.com.au)

F +61 7 3367 6085

**[QRL.COM.AU](http://QRL.COM.AU)**